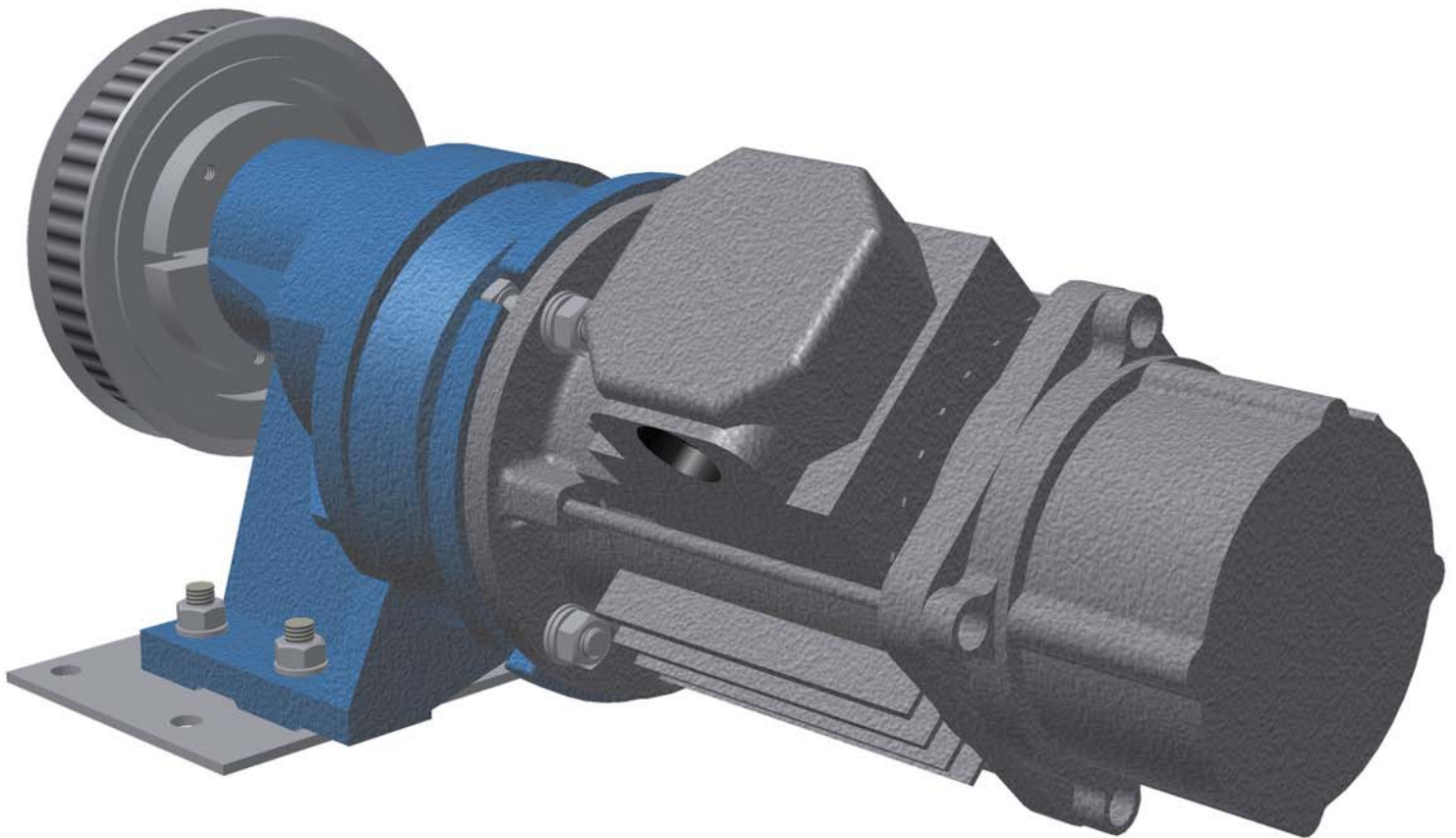




# INSTALLATION GUIDE

## HSD Door Operator



## **Copyright**

Copyright 2006, The Peelle Company Ltd. All Rights Reserved.

This document may not be reproduced, electronically or mechanically, in whole or in part, without written permission from The Peelle Company Ltd.

## **Trademarks**

All trademarks or registered product names appearing in this document are the exclusive property of the respective owners.

## **Warning and Disclaimer**

Although every effort has been made to make this document as complete and accurate as possible, The Peelle Company Ltd. and the document authors, publishers, distributors, and representatives have neither liability nor responsibility for any loss or damage arising from information contained in this document or from informational errors or omissions. Information contained in this document shall not be deemed to constitute a commitment to provide service, equipment, or software by The Peelle Company Ltd. or the document authors, publishers, distributors, or representatives.

## **Limited Warranty**

- a. Peelle warrants to the Customer that goods and services sold will be free from defects in material, workmanship and title and will conform to any mutually agreed upon specifications. If any failure to meet this warranty appears within one year from the date of shipment of the goods or completion of the services, on the condition that Peelle be promptly notified in writing, Peelle will correct any such failure by re-performing any defective portion of the services furnished and supplying conforming goods. If the contract covers installation, repair or maintenance, Peelle will correct the failure by re-performing any defective service, and either repairing or replacing (at its option) any defective goods furnished and any damaged equipment upon which the service was performed resulting from defective service. If re-performance is not practicable, Peelle will furnish without charge services in an amount essentially equal to those which, in Peelle's sole judgement, would have been required for re-performance.
- b. The preceding paragraph a. sets for the exclusive remedy for all claims based on failure of, defect in, goods or services sold hereunder, whether the failure or defect arises before or during the warranty period, and whether a claim, however instituted, is based on contract, indemnity, warranty, tort (including negligence), strict liability or otherwise. The foregoing warranty is exclusive and is in lieu of all other warranties whether written, oral, implied or statutory.

AS TO ALL GOODS SOLD, NO IMPLIED STATUTORY WARRANTY OF MERCHANTABILITY OR FITNESS FOR PARTICULAR PURPOSE SHALL APPLY.

## Important Precautions and Useful Information

This preface contains information that will help you understand and safely maintain Peelle equipment. We strongly recommend you review this preface and read this manual before installing, adjusting, or maintaining Peelle equipment. This preface discusses:

- Safety and Other Symbol Meanings
- Environmental Considerations

## Safety and Other Symbol Meanings



### **Danger**

This manual symbol is used to alert you to procedures, instructions, or situations which, if not done properly, might result in personal injury or substantial equipment damage.



### **Caution**

This manual symbol is used to alert you to procedures, instructions, or situations which, if not done properly, might result in equipment damage.

### **Note**



This manual symbol is used to alert you to instructions or other immediately helpful information.

## Environmental Considerations

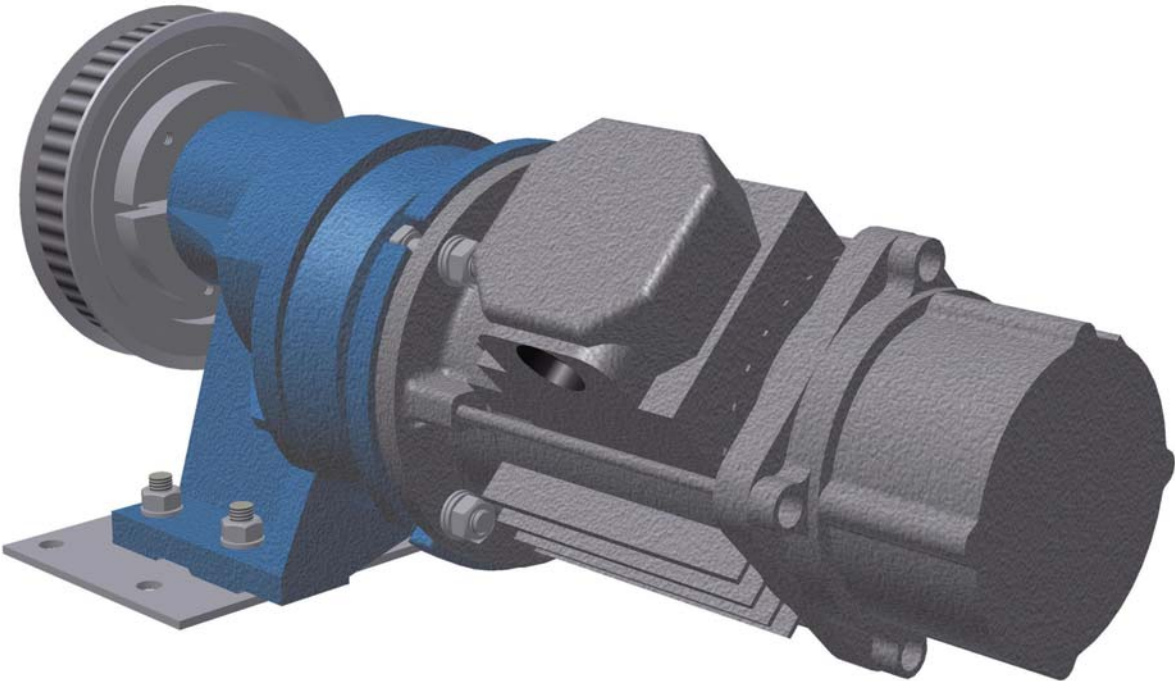
- Keep ambient temperature between 32 and 104 degrees F (0 to 40 degrees C).
- Prevent condensation on the equipment.
- Make certain that power line fluctuations are within plus or minus 5% of proper value.

# HSD Contents

<b>About HSD</b> .....	<b>1</b>
<b>Installation Checklist</b> .....	<b>2</b>
Cable Access .....	4
Control Input Wiring and Verification .....	5
<b>Product Specifications</b> .....	<b>7</b>
<b>HSD Door Operator Adjustments</b> .....	<b>8</b>
Checking Motor Rotation .....	8
HSD Programmer Controls .....	9
Learning Full Open and Full Close Positions .....	10
Establishing DCL .....	10
Performing the Learn Operation .....	11
Verifying Door Operation .....	12
Door Operation Example .....	12
Adjusting Parameters .....	13
Parameter Adjustment Example .....	15
<b>Measuring Door Closing Force</b> .....	<b>16</b>
<b>Troubleshooting</b> .....	<b>19</b>
Helpful Hints .....	19
Door Open and Door Close Logic .....	19
Self-Holding .....	19
Door Close Limit and Door Open Limit .....	19
Limit #1 and Limit #2 .....	20
Car Door Bumpers .....	20
Motor Terminal Designation .....	20
Learn Operation .....	20
Stall Protection .....	21
Door Open and Door Close Protection Timers .....	21
Temporary Operation for Evaluation .....	21
Encoder Cable .....	22
Auto Reset .....	22
Control Signal Status .....	22
Functional Troubleshooting .....	23
Power Up .....	23
Motor Synchronization .....	24
First Door Closing .....	24
Learn Process .....	25
First Open/Close After Cycling Power .....	27
Opening and Closing .....	28
Reopening and Reclosing .....	29
Torque Adjustment .....	30
<b>Maintenance</b> .....	<b>31</b>
<b>Firmware Upgrades</b> .....	<b>31</b>
Replacing Microchips .....	32
<b>Board Set Replacement</b> .....	<b>33</b>

**About HSD**

The Peelle HSD door operator is an advanced design, linear operator. HSD generates open and close limits electronically, eliminating mechanical cams and switches. Linear technology allows a smaller, more efficient door operator, greatly simplifying installation and maintenance. This guide provides installation, adjustment, and troubleshooting information for the HSD motor and inverter drive.

**Figure 1. Peelle HSD Door Operator**

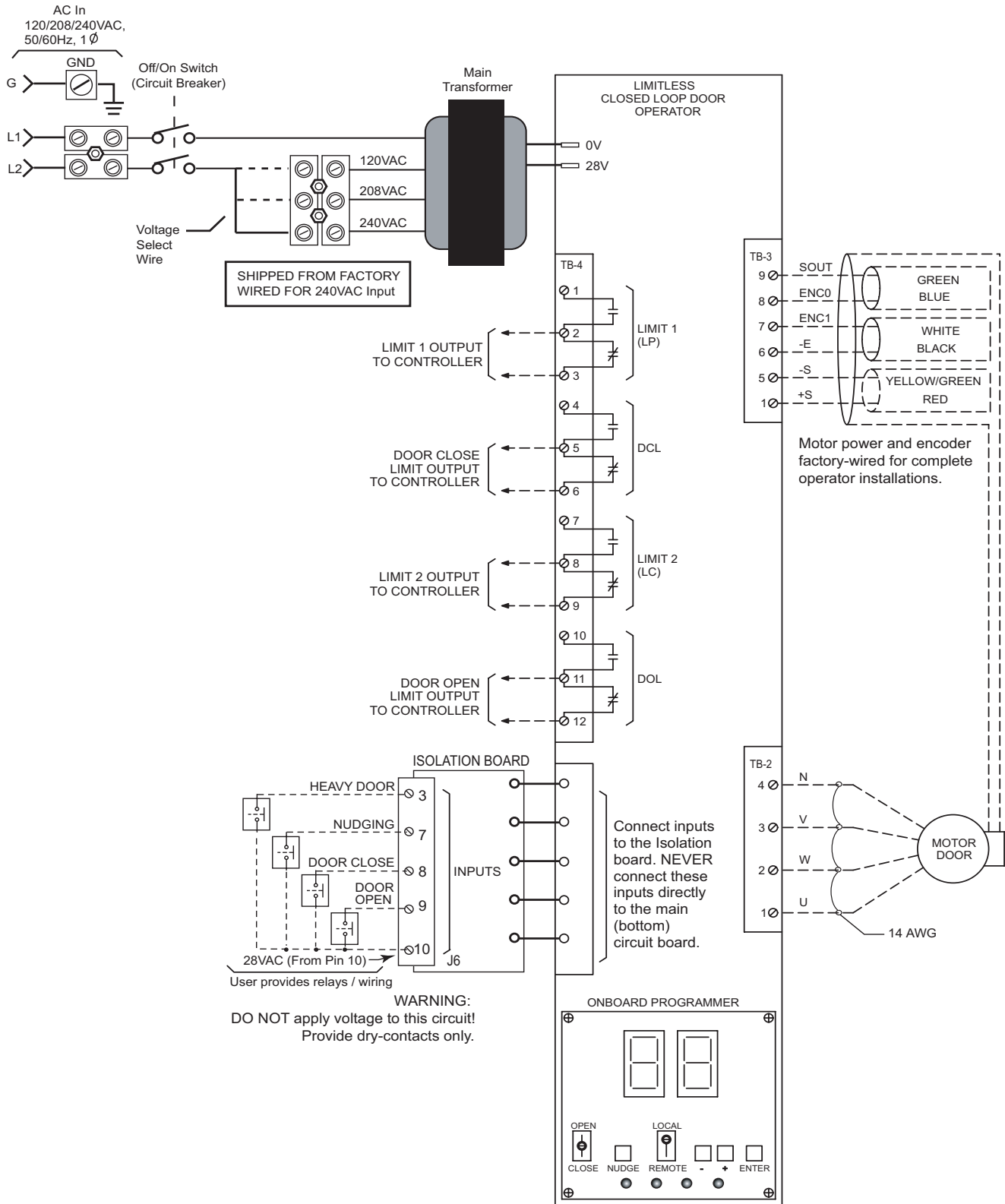
# Installation Checklist

Before installing, make sure you have what you need:

1. A fused 120, 208, or 240VAC, single-phase, 350VA minimum, supply available from the elevator controller to the door operator. Input voltage must be within +/- 5% of specified voltage. (DO NOT use the car lighting circuit for door power.)
2. A sufficient number of wires from the controller to the door operator drive:
  - Two wires for power
  - Three wires (one each) for drive common (different from controller common), door open, and door close. One additional wire if nudging is required. One additional wire if heavy door is required. (Three to five wires.)
  - Three wires (one each) for controller common (different from drive common), DCL, and DOL. If DCL and DOL do not share a common wire, then four wires are required. (Three to four wires.)
  - Three or four wires (one each) for auxiliary Limit #1 and Limit #2 for retiring cam, limited door reversal, advance start, etc. are required (depending upon how these limits are wired on your job).
3. Dry (unused), normally open contacts for door open and door close and/or nudging and heavy door (position contact). (If not, can the required contacts be made available by reusing existing contacts for the original door operator or will relays need to be installed in the Controller or on the car?)
4. All door operators require door open and close bumpers. Bumpers must be in good condition for proper operation
5. Read this User Guide before starting installation, especially the HSD Adjustments and Troubleshooting sections.

# Installation Checklist

**Figure 2. HSD Wiring Diagram**



## Cable Access

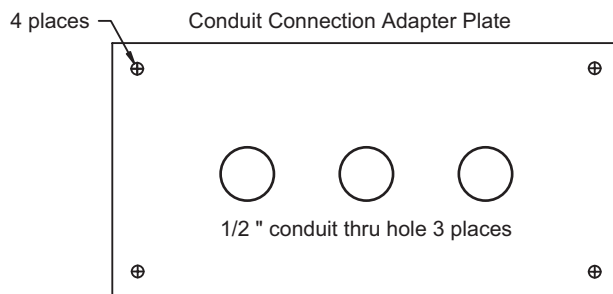
The HSD drive enclosure is designed with easy field access in mind. There are access plates on the enclosure that simplify command signal control and motor connections. The plates have multiple access holes sized to accept 1/2" conduit collars and fittings. Plates are secured to the drive enclosure using four phillips-head screws.

When making connections, you can remove the plates and easily attach conduit hardware, fit wire ends to plug-in connectors, plug in the connectors, then re-attach the plates. When removing a drive, you can unplug connectors, detach the access plates, and remove the drive enclosure.



### Caution

If you need to enlarge the conduit holes, REMOVE the plates and perform the operation OUTSIDE the drive to avoid damaging drive components or getting metal debris inside the enclosure. Damage caused by tools or metal debris is NOT COVERED by warranty.



The circuit board assembly is also attached to an easy-access plate. If there is a circuit board related failure, you can easily unplug motor encoder and control connections, unplug power connections, remove the grounding screw, remove the four access plate screws and slide the entire board assembly out of the enclosure for the fastest possible replacement time. [Please refer to “Board Set Replacement” on page 33.](#)

## Control Input Wiring and Verification

Connect door control inputs from the elevator controller to HSD inverter drive **Isolation board connector J6**. These inputs must be supplied by dry contact closures only.



### Caution

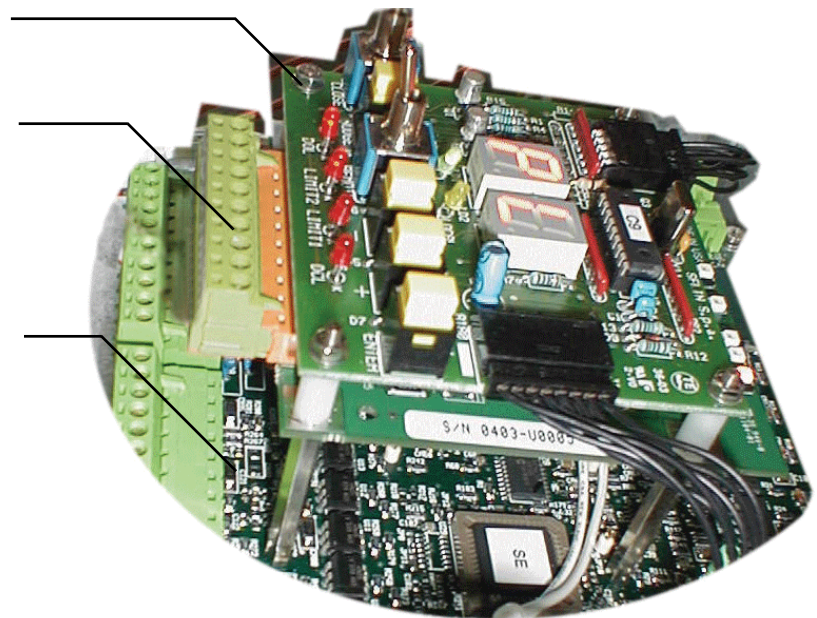
Any external voltages connected to terminals 3, 7, 8, 9, or 10 will damage the drive and void the drive warranty. DO NOT make **input** connections to the Main board (bottom board in drive enclosure).

**Figure 3. HSD Circuit Boards**

Programmer board (top board)

Isolation board (middle board)  
Connector J6

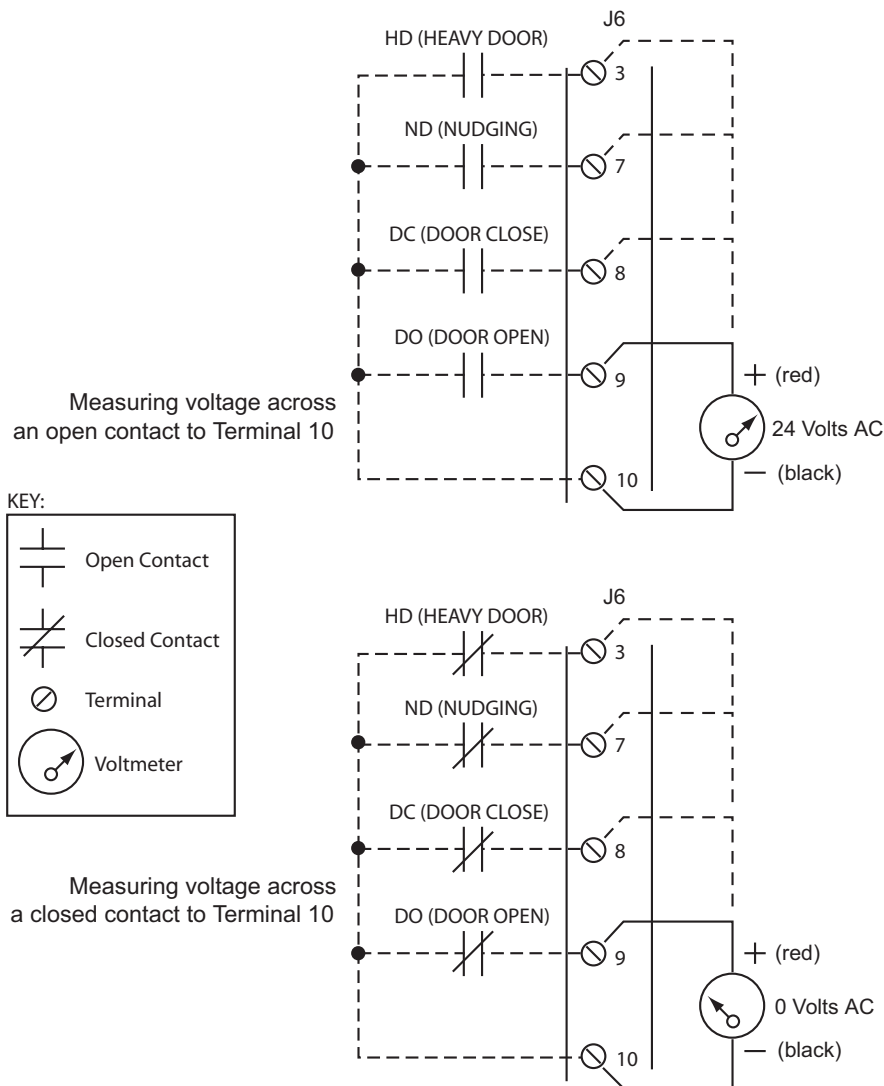
Main board (bottom board)



Referring to the preceding HSD wiring diagram and to the following verification drawing, note that, when closed, the dry contact closures provide a connection between the associated control input (HD, DC, or DO) and terminal 10 on the J6 connector. These connections should be detailed on the job prints supplied by the controller manufacturer. However, especially when upgrading or retrofitting, you may have to provide relays or reuse existing relays to provide these contact closures.

The illustration below provides an example of how to use a voltmeter to test the state (open/closed) of the dry contacts.

**Figure 4. Verifying Contact States at J6 Door Control Inputs**



## Product Specifications

HSD uses a permanent-magnet, brushless motor with a built-in encoder and a microprocessor-based inverter drive.

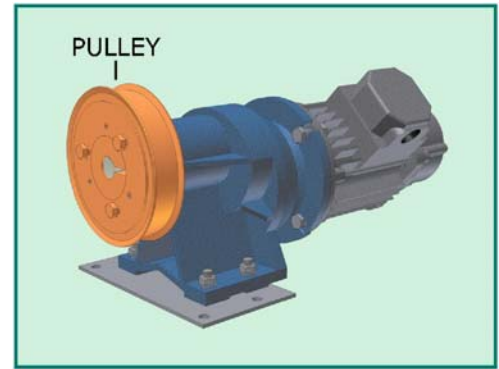
**Table 1. HSD Specifications, Interface Data**

<b>Door Operator Drive Technical Data</b>	
Input Voltage	120/208/240VAC, 50/60Hz, Single-phase
Output Voltage	3-Phase, 30VAC, 9A (26A peak)
Power Requirement	300VA
Controller Type	Closed Loop, Distance and Velocity Feedback, Limitless
<b>Door Motor Technical Data</b>	
Type	Three-phase, synchronous, brushless motor with permanent magnet excitation and built-in digital encoder
Motor	0.564 HP, 3-Phase AC, 8-Pole, 30 Volt, 9A (26A peak), 0 – 2000 RPM, 0 – 133Hz
Encoder	640 PPR (Pulses Per Revolution)
<b>Elevator Control Interface Data</b>	
Input Signals	Door Open Door Close Nudging Heavy Door
Input Signal Level	Dry Contact
Output Signals	Door Open Limit Door Close Limit Limit 1 Limit 2
Output Signal Level	N.O./N.C. Contact, 10 Amp

# HSD Door Operator Adjustments

This section describes:

- Checking motor rotation
- [HSD Programmer Controls](#)
- [Learning Full Open and Full Close positions](#)
- [Verifying Operation](#)
- [Adjusting parameters](#)



## Checking Motor Pulley Rotation

Motor control connections from inverter drive terminals TB2 and TB3 to the motor assume clockwise pulley rotation when the elevator doors are closing. It is important to verify that this is the case:

1. **Manually open and close** elevator doors while watching pulley rotation.
2. Viewed from the motor shaft end, pulley must rotate clockwise when doors are closing. If so, connections shown in the wiring diagram and in the table below are correct:

**Table 2. Motor Connections from Wiring Diagram**

Motor	TB2 Connector
U1	Terminal 1
W1	Terminal 2
V1	Terminal 3
N	Terminal 4
<b>TB3 Connector</b>	
SOUT	Terminal 9
ENC1 (blue)	Terminal 8
ENC0 (white)	Terminal 7
-E	Terminal 6
-S	Terminal 5
+S	Terminal 1

3. If, as viewed from the shaft end, pulley rotates counter-clockwise when doors are closing, connections must be changed as shown in the following table:

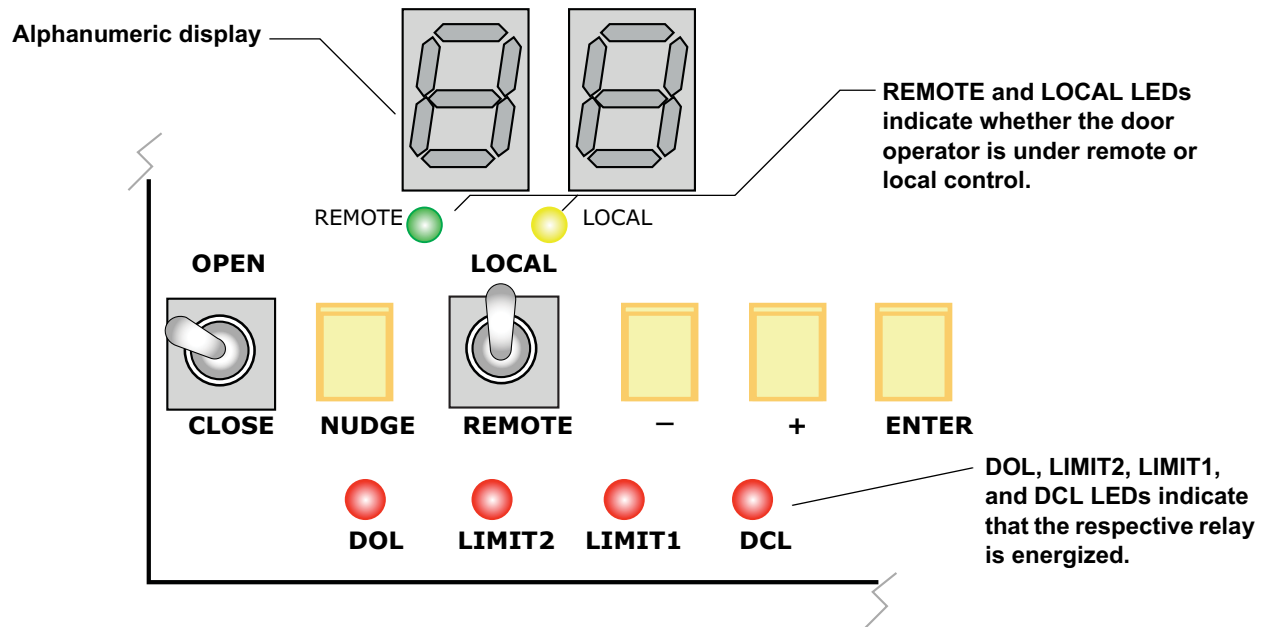
**Table 3. Motor Connections if Rotation is Counter-Clockwise as Doors Close**

Motor	TB2 Connector
U1	Terminal 1
W1	Terminal 3 (changed)
V1	Terminal 2 (changed)
N	Terminal 4
<b>TB3 Connector</b>	
SOUT	Terminal 9
ENC1 (blue)	Terminal 7 (changed)
ENC0 (white)	Terminal 8 (changed)
-E	Terminal 6
-S	Terminal 5
+S	Terminal 1

### HSD Programmer Controls

Doors can be controlled from the inverter drive unit using programmer switches and displays located on the programmer (top) board. Read this page, then perform the door learning procedure on the following page. **When initially installed, the DCL (Door Close Limit) must be established before parameters can be changed.**

**Figure 5. Inverter Drive Programmer Switches**



Programmer controls include:

- Alphanumeric display: Displays parameters. Displays numeric value of a selected parameter (0 to 31). Higher number = higher value.
- Remote and Local LEDs: Indicate the current setting of the Local/Remote toggle switch. When Remote is lighted, the elevator controller is controlling the drive. When Local is lighted, the programmer switches are controlling the drive.
- Open/Close: Three-position, spring-loaded switch active when Local control is selected:
  - Open: Hold in Open position to open elevator doors.
  - Close: Hold in Close position to close elevator doors.
- Nudge: Hold Close switch and press Nudge to close elevator doors at nudging (reduced) speed.
- Local/Remote: Two-position toggle switch, selecting:
  - Local: Local inverter drive control (from programmer switches)
  - Remote: Remote inverter drive control (from elevator controller)
- - and +: Push buttons. Used to select a parameter to be adjusted and to change value of a parameter after it is selected.
- Enter: After toggling to a parameter using the + and - buttons, press Enter to select that parameter for adjustment. After adjusting a value using the + and - buttons, press Enter to place the new value in local memory. To return to operating mode, use + or - buttons to toggle the alphanumeric display to “do”, then press Enter.



## Learning Full Open and Full Close Positions

The operator learns open and close limits when current rises to preset limits (C1 open, C3 close) when doors reach full open or full close. Once limits are learned, HSD is able to distinguish between an obstruction and full open or close positions. DOL (Door Open Limit) and DCL (Door Close Limit) can be learned only in the last 1/2" (13 mm) of door travel in either direction.

- Doors Full Open: Door Open Limit is energized and programmer board DOL LED lights
- Doors Full Closed: Door Close Limit is energized and programmer board DCL LED lights

### Establishing DCL





One of the parameters programmed into the drive is C3, closing torque. In order to establish the Door Close Limit, the operator must close the doors and continue applying closing torque until the C3 value is achieved. At that point, the DCL LED on the programmer board will light and the programmer display will "say" **Lr**. Once Lr is displayed, you are able to cycle through and change parameter values, even before performing a "door learn" operation.

1. Verify that elevator doors are closed.
2. Place Local/Remote switch in the **Local** position.
3. Turn power **ON**.

For a few seconds, dashes will be displayed on the LED display. Then, the dash on the right hand display will disappear. The inverter drive is ready to accept input. 

4. Hold the Open/Close switch in the Close position. The doors will close. The DCL LED will light and **Lr** will be displayed. The motor may cog to establish DCL. (The doors may actually move open slightly before closing because the operator does not "know" its position yet.)

**If DCL is not Established:** During test, default values are programmed into the door operator. The door opening and the door weight on the test unit may be very different from your field installation needs. It is also possible that the C3 value programmed is too high for your installation. Any of these conditions can prevent the operator from being able to establish DCL. If the operator cannot establish DCL:

1. Open the door slightly.
2. Shut the drive switch OFF.
3. Hold the Open/Close switch in the CLOSE position.
4. Continue to hold the switch in the CLOSE position while turning power back ON.
5. The door will close and establish DCL. Once the DCL LED has lighted, release the Open/Close switch. (If DCL is still not established, repeat steps 1 through 5 until it is.)
6. The display will show .
7. Press the + (or -) button until  is displayed. Press ENTER to display the stored C3 setting.
8. Use the + or - button the set the value to 10. Press Enter to enter the new value.
9. Press the + or - button until  is displayed. Press Enter to save changes to memory.  will be displayed.

## HSD Door Operator Adjustments

If your doors are very heavy or very light, a C3 value of 10 may be too little or too much and not move the doors properly during the learn operation or regular opening and closing. If so adjust C3 value two “steps” at a time until the closing torque applied is right for your doors.




### Performing the Learn Operation

After DCL is established as described in the preceding paragraphs and Lr is displayed, you can complete the door learn operation.

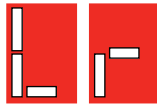
1. Press Enter.

The doors will automatically open at low speed to FULL OPEN position to establish DOL and then automatically close at low speed to FULL CLOSE position. Learning is complete.

It is very unusual but, if the operator fails to recognize DOL when the doors reach full open during the initial, slow, learn cycle, the C1 (door opening torque/current) parameter may be set too high. If this is the case:

- Press the + (or -) button until  is displayed. Press ENTER to display the stored C1 setting.
- Use the - button to reduce the value two “steps.” Press Enter to enter the new value.
- Press the + or - button until  is displayed. Press Enter to save changes to memory.  will be displayed.
- Repeat the learn operation.

#### Note



 is displayed during normal operation after all parameters have been entered and door limits have been learned.

---

## Verifying Door Operation

### Note

Whenever power is turned on (cycled) to the HSD drive, the first open operation will be at Low Speed.

---

To verify door operation:

1. Hold Open/Close in Open position. Doors will open and detect Full Open position. DOL should be displayed.
2. Hold Open/Close in Close position. Doors will close and detect Full Close position. DCL should be displayed.

### Door Operation Example

When in Local mode, you can operate the doors using the programmer switches.

To open the doors:

- Hold the Open/Close switch to Open. Pause at any point if desired. The Limit 2 LED will light at some (user adjustable, LC parameter) point as the doors are opening. When the Door Open Limit is reached (DOL relay energized), the DOL LED will light.

To close the doors:

- Hold the Open/Close switch to Close. Pause at any point if desired. The Limit 1 LED will light at some (user adjustable, LP parameter) point as the doors are closing. When the Door Close Limit is reached (DCL relay energized), the DCL LED will light.

To close at nudging speed:

- Hold the Open/Close switch to Close. Press the Nudge button. The doors will close at reduced speed.

### Adjusting Parameters

All door operator adjustments are made by selecting and changing parameters using inverter drive programmer switches. All parameter values are numeric, from 0 to 31. The higher the number, the greater the parameters effect.

**Note** 

Parameter values can only be changed or viewed when elevator doors are Full Closed and Door Close Limit LED is lighted.

**After changing parameters, you must select the parameter “do” and press Enter to save the changes. If you change a torque value (marked with an \* in the table), you must perform a door learn operation after saving changes.** To return to automatic door operation, place the Local/Remote switch back in Remote position. (Otherwise, the operator will not respond to open or close commands from the elevator controller.)

Use the following table and the Motion Profile illustration to adjust parameters.

**Table 4. Inverter Drive Parameters**

Parameter	Description
PL	Start Open Position: Position where doors start to accelerate. Higher value = Position farther from full close.
P2	Open Slowdown Position: Position where doors begin to decelerate from high to low opening speed. Higher value = deceleration nearer to full open position.
P7	Close Slowdown Position: Position where doors begin to decelerate from high to low closing speed. Higher value = deceleration nearer to full close position.
Po	Reopen Slowdown Position: Higher value = Reopen slowdown position starts nearer to full open.
Pc	Reclose Slowdown Position: Higher value = Reclose slowdown position starts nearer full close.
Pr	Reopen Distance: Distance from full open where Po parameter, Reopen Slowdown Position, and Ar parameter, Reopen Deceleration, can be activated. 00 value = from full open to 75% of full open. Setting parameter from 01 to 31 = from 75% of full open to 25% of full open. Note: Most door operators will not require adjustment of this parameter. This parameter is factory set to 00. Should be set to 00 unless absolutely necessary. See Caution following this table.
U0	Start Open Speed: Higher value = More speed.
U1	High Opening Speed: Higher value = More speed.
U2	Low Opening Speed: Higher value = More speed.
U3	High Closing Speed: Higher value = More speed.
U4	Low Closing Speed: Higher value = More speed.
Ud	Nudging Speed: Higher value = More speed.
A0	Opening Acceleration: Higher value = Faster acceleration.
A1	Opening Deceleration: Higher value = Faster deceleration.
A2	Closing Acceleration: Higher value = Faster acceleration.
A3	Closing Deceleration: Higher value = Faster deceleration.
Ab	Braking Deceleration: Deceleration during door reversal. Higher value = More deceleration.
Ar	Reopen Deceleration: Higher value = Faster deceleration.
F3	Heavy Door High Closing Speed: Higher value = More speed. This value must be lower than U3.

**Table 4. Inverter Drive Parameters**

Parameter	Description
F7	Heavy Door Close Slowdown Position: Position where doors begin to decelerate from high to low closing speed. Higher value = deceleration nearer to full close position.
Fd	Heavy Door Nudging Speed: Higher values = More Speed.
*C1	Maximum current threshold to establish DOL. Set according to operator characteristics. Heavy doors and/or a geared operator that requires high torque will require a higher setting. Light doors requiring low torque can use a lower setting.
*C2	Maximum allowed opening torque before DOL is detected. Find the setting appropriate to performance needs and door conditions, then increase it by 2.
*C3	Maximum allowed closing torque during normal operation: Higher value = More torque. See the Door Closing Time compliance tables.
*Co	Hold Open Torque: Higher value = More torque. Torque when doors are full open regardless of the state of the Open command.
*Cc	Hold Close Torque with Close command active: Higher value = More torque. Set to the minimum necessary to keep the door closed.
*Cr	Hold Close Torque when Close command is NOT active. Set to minimum necessary to keep the door closed.
*Cd	Maximum allowed torque during nudging door closing. See the Door Closing Time compliance tables.
*Cb	Braking torque: Limits braking torque during slowdown. Higher Value = More braking torque. Lower Value = Less braking torque. 00 value = no effect. Should be set to 00 unless absolutely necessary to set otherwise. See Caution following this table.
LP	Limit 1: Higher value = Output turns on when doors are nearer to close position. Lower value = Output turns on when doors are farther from full close position.
LC	Limit 2: Higher value = Output turns on when doors are nearer to open position. Lower value = Output turns on when doors are farther from full open position.
do	Select Operation Mode: Once a parameter is adjusted, operation mode must be selected. Otherwise, door operator will not respond to open or close commands.
Lr	Learn Command:



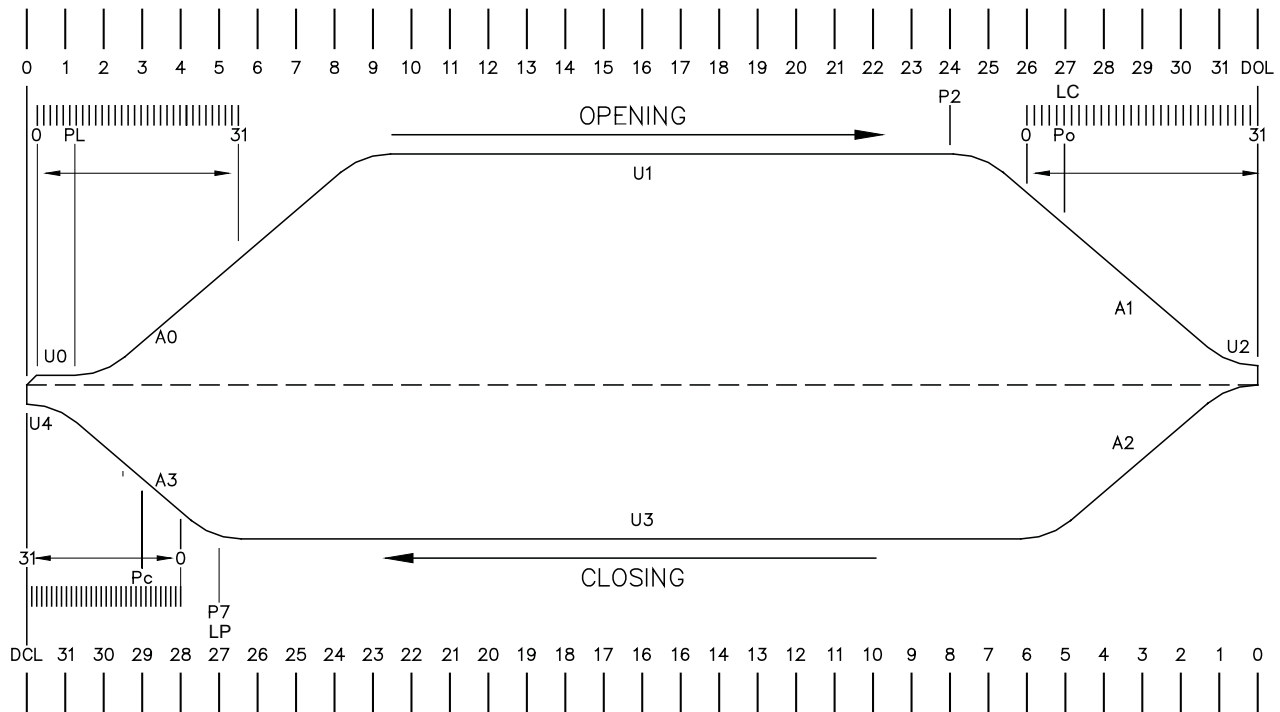
Any time the door torque parameters are changed, the Learn process must be repeated. Torque parameters are marked with an \* in the preceding table.



**Caution**

Pr and Cb parameters should always be set to “00” unless it is absolutely necessary to set them otherwise. Please refer to “Opening and Closing” on page 28 for Cb. Please refer to “Reopening and Reclosing” on page 29 for Pr.

**Figure 6. Motion Profile**



## Parameter Adjustment Example

To adjust a parameter (U1, high opening speed, in this example):

1. Check that the elevator doors are fully closed.

### Note

Parameter values can only be changed or viewed when elevator doors are Full Closed and Door Close Limit LED is lighted.

2. Place the Local/Remote switch in the Local position.
3. If necessary, hold the Open/Close switch to Close until the alphanumeric display shows "Lr" and DCL LED is illuminated.
4. Use the + and/or - buttons to toggle to the desired parameter (U1 in this example).
5. Press Enter. The current value of the parameter will be displayed (0 - 31).
6. Use the + and/or - buttons to change the value.
7. When the desired value is displayed, press Enter to hold it in local memory.
8. If desired, continue setting additional parameters.
9. When ready to save your changes, use the + and - buttons to change the display to "do", then press Enter.
10. Place the Local/Remote switch back to the Remote position.

### Note


After adjusting a torque parameter, always re-learn Open/Close limits. Please refer to "Learning Full Open and Full Close Positions" on page 10.

## Measuring Door Closing Force

To measure door closing force:

1. Park the car at a floor.
2. Begin to close the doors. Allow them to close 1/3 to 2/3 of their normal travel, then stop them.
3. Insert a force measuring device appropriate to measure 150N against the stopped door. Slowly release the doors so that they are now held stationary by the measuring device.
4. Slowly back off on the device until the door just starts to move. At this point, the door and measuring forces are approximately equal and the closing force value may be read.

### Note



The “Minimum Closing Time” tables on the following pages reflect an average kinetic energy of 10 J (4J, nudging) and provide the minimum code closing times for most normal door configurations and sizes (normal and nudging operation).

---

# Measuring Door Closing Force

**Table 5. Center Parting Doors**

Door Opening Width [mm]	MINIMUM CLOSING TIME FOR CENTRE PARTING DOORS [sec]																									
	1500	1600	1700	1800	1900	2000	2100	2200	2300	2400	2500	2600	2700	2800	2900	3000	3100	3200	3300	3400	3500	3600	3700	3800	3900	4000
100	1.68	1.79	1.90	2.01	2.12	2.24	2.35	2.46	2.57	2.68	2.80	2.92	3.03	3.13	3.24	3.35	3.47	3.58	3.69	3.80	3.91	4.02	4.14	4.25	4.36	4.47
150	2.05	2.19	2.33	2.46	2.60	2.74	2.88	3.01	3.15	3.29	3.42	3.56	3.70	3.83	3.97	4.11	4.24	4.38	4.52	4.66	4.79	4.93	5.07	5.20	5.34	5.48
200	2.37	2.53	2.69	2.85	3.00	3.16	3.32	3.48	3.64	3.79	3.95	4.11	4.27	4.43	4.59	4.74	4.90	5.06	5.22	5.38	5.53	5.69	5.85	6.01	6.17	6.32
250	2.65	2.83	3.01	3.18	3.36	3.54	3.71	3.89	4.07	4.24	4.42	4.60	4.77	4.95	5.13	5.30	5.48	5.66	5.83	6.01	6.19	6.36	6.54	6.72	6.89	7.07
300	2.90	3.10	3.29	3.49	3.68	3.87	4.07	4.26	4.45	4.64	4.84	5.03	5.23	5.42	5.62	5.81	6.00	6.20	6.39	6.58	6.78	6.97	7.17	7.36	7.55	7.75
350	3.14	3.35	3.56	3.76	3.97	4.18	4.39	4.60	4.81	5.02	5.23	5.44	5.65	5.86	6.07	6.27	6.48	6.69	6.90	7.11	7.32	7.53	7.74	7.95	8.16	8.37
400	3.35	3.58	3.80	4.02	4.25	4.47	4.70	4.92	5.14	5.37	5.59	5.81	6.04	6.26	6.48	6.71	6.93	7.16	7.38	7.60	7.83	8.05	8.27	8.50	8.72	8.94
450	3.56	3.79	4.03	4.27	4.51	4.74	4.98	5.22	5.45	5.69	5.93	6.17	6.40	6.64	6.88	7.12	7.35	7.59	7.83	8.06	8.30	8.54	8.78	9.01	9.25	9.49
500	3.75	4.00	4.25	4.50	4.75	5.00	5.25	5.50	5.75	6.00	6.25	6.50	6.75	7.00	7.25	7.50	7.75	8.00	8.25	8.50	8.75	9.00	9.25	9.50	9.75	10.00
550	3.93	4.20	4.46	4.72	4.98	5.24	5.51	5.77	6.03	6.29	6.56	6.82	7.08	7.34	7.60	7.87	8.13	8.39	8.65	8.91	9.18	9.44	9.70	9.96	10.23	10.49
600	4.11	4.38	4.66	4.93	5.20	5.48	5.75	6.02	6.30	6.57	6.85	7.12	7.39	7.67	7.94	8.22	8.49	8.76	9.04	9.31	9.59	9.86	10.13	10.41	10.68	10.95
650	4.28	4.56	4.85	5.13	5.42	5.70	5.99	6.27	6.56	6.84	7.13	7.41	7.70	7.98	8.27	8.55	8.84	9.12	9.41	9.69	9.98	10.26	10.55	10.83	11.12	11.40
700	4.44	4.73	5.03	5.32	5.62	5.92	6.21	6.51	6.80	7.10	7.40	7.69	7.99	8.28	8.58	8.87	9.17	9.47	9.76	10.06	10.35	10.65	10.94	11.24	11.54	11.83
750	4.59	4.90	5.21	5.51	5.82	6.12	6.43	6.74	7.04	7.35	7.65	7.96	8.27	8.57	8.88	9.19	9.49	9.80	10.10	10.41	10.72	11.02	11.33	11.64	11.94	12.25
800	4.74	5.06	5.38	5.69	6.01	6.32	6.64	6.96	7.27	7.59	7.91	8.22	8.54	8.85	9.17	9.49	9.80	10.12	10.44	10.75	11.07	11.38	11.70	12.02	12.33	12.65
850	4.89	5.22	5.54	5.87	6.19	6.52	6.85	7.17	7.50	7.82	8.15	8.47	8.80	9.13	9.45	9.78	10.10	10.43	10.76	11.08	11.41	11.73	12.06	12.39	12.71	13.04
900	5.03	5.37	5.70	6.04	6.37	6.71	7.04	7.38	7.71	8.05	8.39	8.72	9.06	9.39	9.73	10.06	10.40	10.73	11.07	11.40	11.74	12.07	12.41	12.75	13.08	13.42
950	5.17	5.51	5.86	6.20	6.55	6.89	7.24	7.58	7.93	8.27	8.62	8.96	9.30	9.65	9.99	10.34	10.68	11.03	11.37	11.72	12.06	12.41	12.75	13.09	13.44	13.78
1000	5.30	5.66	6.01	6.36	6.72	7.07	7.42	7.78	8.13	8.49	8.84	9.19	9.55	9.90	10.25	10.61	10.96	11.31	11.67	12.02	12.37	12.73	13.08	13.44	13.79	14.14
1050	5.43	5.80	6.16	6.52	6.88	7.25	7.61	7.97	8.33	8.69	9.06	9.42	9.78	10.14	10.51	10.87	11.23	11.59	11.96	12.32	12.68	13.04	13.40	13.77	14.13	14.49
1100	5.56	5.93	6.30	6.67	7.05	7.42	7.79	8.16	8.53	8.90	9.27	9.64	10.01	10.38	10.75	11.12	11.50	11.87	12.24	12.61	12.98	13.35	13.72	14.09	14.46	14.83
1150	5.69	6.07	6.45	6.82	7.20	7.58	7.96	8.34	8.72	9.10	9.48	9.86	10.24	10.62	11.00	11.37	11.75	12.13	12.51	12.89	13.27	13.65	14.03	14.41	14.79	15.17
1200	5.81	6.20	6.58	6.97	7.36	7.75	8.13	8.52	8.91	9.30	9.68	10.07	10.46	10.84	11.23	11.62	12.01	12.39	12.78	13.17	13.56	13.94	14.33	14.72	15.10	15.49
1250	5.93	6.32	6.72	7.12	7.51	7.91	8.30	8.70	9.09	9.49	9.88	10.28	10.67	11.07	11.46	11.86	12.25	12.65	13.04	13.44	13.83	14.23	14.63	15.02	15.42	15.81
1300	6.05	6.45	6.85	7.26	7.66	8.06	8.47	8.87	9.27	9.67	10.08	10.48	10.88	11.29	11.69	12.09	12.50	12.90	13.30	13.71	14.11	14.51	14.92	15.32	15.72	16.12
1350	6.16	6.57	6.98	7.39	7.81	8.22	8.63	9.04	9.45	9.86	10.27	10.68	11.09	11.50	11.91	12.32	12.73	13.15	13.56	13.97	14.38	14.79	15.20	15.61	16.02	16.43
1400	6.27	6.69	7.11	7.53	7.95	8.37	8.78	9.20	9.62	10.04	10.46	10.88	11.29	11.71	12.13	12.55	12.97	13.39	13.80	14.22	14.64	15.06	15.48	15.90	16.31	16.73
1450	6.39	6.81	7.24	7.66	8.09	8.51	8.94	9.37	9.79	10.22	10.64	11.07	11.49	11.92	12.35	12.77	13.20	13.62	14.05	14.47	14.90	15.33	15.75	16.18	16.60	17.03
1500	6.50	6.93	7.36	7.79	8.23	8.66	9.09	9.53	9.96	10.39	10.83	11.26	11.69	12.12	12.56	12.99	13.42	13.86	14.29	14.72	15.16	15.59	16.02	16.45	16.89	17.32

Combined Weight of Car and Hoistway Doors and All Attached Equipment [kg]

NOTES:

$$\frac{1}{2} M \times (V)^2 = 10J$$

Kinetic Energy Formula

M - Combined Weight of Car and Hoistway Doors and All Attached Equipment

V - Speed in meter per second

**Table 6. Center Parting Doors without Reopening Device (Nudging)**

Door Opening Width [mm]	MINIMUM CLOSING TIME FOR CENTER PARTING DOORS [sec]																									
	1500	1600	1700	1800	1900	2000	2100	2200	2300	2400	2500	2600	2700	2800	2900	3000	3100	3200	3300	3400	3500	3600	3700	3800	3900	4000
100	2.65	2.83	3.01	3.18	3.36	3.54	3.71	3.89	4.07	4.24	4.42	4.60	4.77	4.95	5.13	5.30	5.48	5.66	5.83	6.01	6.19	6.36	6.54	6.72	6.89	7.07
150	3.25	3.46	3.68	3.90	4.11	4.33	4.55	4.76	4.98	5.20	5.41	5.63	5.85	6.06	6.28	6.50	6.71	6.93	7.14	7.36	7.58	7.79	8.01	8.23	8.44	8.66
200	3.75	4.00	4.25	4.50	4.75	5.00	5.25	5.50	5.75	6.00	6.25	6.50	6.75	7.00	7.25	7.50	7.75	8.00	8.25	8.50	8.75	9.00	9.25	9.50	9.75	10.00
250	4.19	4.47	4.75	5.03	5.31	5.59	5.87	6.15	6.43	6.71	6.99	7.27	7.55	7.83	8.11	8.39	8.66	8.94	9.22	9.50	9.78	10.06	10.34	10.62	10.90	11.18
300	4.59	4.90	5.21	5.51	5.82	6.12	6.43	6.74	7.04	7.35	7.65	7.96	8.27	8.57	8.88	9.19	9.49	9.80	10.10	10.41	10.72	11.02	11.33	11.64	11.94	12.25
350	4.96	5.29	5.62	5.95	6.28	6.61	6.95	7.28	7.61	7.94	8.27	8.60	8.93	9.26	9.59	9.92	10.25	10.61	10.96	11.31	11.67	12.02	12.37	12.73	13.08	13.44
400	5.30	5.66	6.01	6.36	6.72	7.07	7.42	7.78	8.13	8.49	8.84	9.19	9.55	9.90	10.25	10.61	10.96	11.31	11.67	12.02	12.37	12.73	13.08	13.44	13.79	14.14
450	5.63	6.00	6.38	6.75	7.13	7.50	7.88	8.25	8.63	9.00	9.38	9.75	10.13	10.50	10.88	11.25	11.63	12.00	12.38	12.75	13.13	13.50	13.88	14.25	14.63	15.00
500	5.93	6.32	6.72	7.12	7.51	7.91	8.30	8.70	9.09	9.49	9.88	10.28	10.67	11.07	11.46	11.86	12.25	12.65	13.04	13.44	13.83	14.23	14.63	15.02	15.42	15.81
550	6.22	6.63	7.05	7.46	7.88	8.29	8.71	9.12	9.54	9.95	10.36	10.78	11.19	11.61	12.02	12.44	12.85	13.27	13.68	14.10	14.51	14.92	15.34	15.75	16.17	16.58
600	6.50	6.93	7.36	7.79	8.23	8.66	9.09	9.53	9.96	10.39	10.83	11.26	11.69	12.12	12.56	12.99	13.42	13.86	14.29	14.72	15.16	15.59	16.02	16.45	16.89	17.32
650	6.76	7.21	7.66	8.11	8.56	9.01	9.46	9.92	10.37	10.82	11.27	11.72	12.17	12.62	13.07	13.52	13.97	14.42	14.87	15.32	15.77	16.22	16.68	17.13	17.58	18.03
700	7.02	7.48	7.95	8.42	8.89	9.35	9.82	10.29	10.76	11.22	11.69	12.16	12.63	13.10	13.56	14.03	14.50	14.97	15.43	15.90	16.37	16.84	17.31	17.77	18.24	18.71
750	7.26	7.75	8.23	8.71	9.20	9.68	10.17	10.65	11.13	11.62	12.10	12.59	13.07	13.56	14.04	14.52	15.01	15.49	15.98	16.46	16.94	17.43	17.91	18.40	18.88	19.36
800	7.50	8.00	8.50	9.00	9.50	10.00	10.50	11.00	11.50	12.00	12.50	13.00	13.50	14.00	14.50	15.00	15.50	16.00	16.50	17.00	17.50	18.00	18.50	19.00	19.50	20.00
850	7.73	8.25	8.76	9.28	9.79	10.31	10.82	11.34	11.85	12.37	12.88	13.40	13.92	14.43	14.95	15.46	15.98	16.49	17.01	17.52	18.04	18.55	19.07	19.58	20.10	20.62
900	7.95	8.49	9.02	9.55	10.08	10.61	11.14	11.67	12.20	12.73	13.26	13.79	14.32	14.85	15.38	15.91	16.44	16.97	17.50	18.03	18.56	19.09	19.62	20.15	20.68	21.21
950	8.17	8.72	9.26	9.81	10.35	10.90	11.44	11.99	12.53	13.08	13.62	14.17	14.71	15.26	15.80	16.35	16.89	17.44	17.98	18.53	19.07	19.62	20.16	20.70	21.25	21.79
1000	8.39	8.94	9.50	10.06	10.62	11.18	11.74	12.30	12.86	13.42	13.98	14.53	15.09	15.65	16.21	16.77	17.33	17.89	18.45	19.01	19.57	20.12	20.68	21.24	21.80	22.36
1050	8.59	9.17	9.74	10.31	10.88	11.46	12.03	12.60	13.17	13.75	14.32	14.89	15.47	16.04	16.61	17.18	17.76	18.33	18.90	19.48	20.05	20.62	21.19	21.77	22.34	22.91
1100	8.79	9.38	9.97	10.55	11.14	11.73	12.31	12.90	13.48	14.07	14.66	15.24	15.83	16.42	17.00	17.59	18.18	18.76	19.35	19.93	20.52	21.11	21.69	22.28	22.87	23.45
1150	8.99	9.59	10.19	10.79	11.39	11.99	12.59	13.19	13.79	14.39	14.99	15.59	16.19	16.79	17.38	17.98	18.58	19.18	19.78	20.38	20.98	21.58	22.18	22.78	23.38	23.98
1200	9.19	9.80	10.41	11.02	11.64	12.25	12.86	13.47	14.08	14.70	15.31	15.92	16.53	17.15	17.76	18.37	18.98	19.60	20.21	20.82	21.43	22.05	22.66	23.27	23.88	24.49
1250	9.38	10.00	10.63	11.25	11.88	12.50	13.13	13.75	14.38	15.00	15.63	16.25	16.88	17.50	18.13	18.75	19.38	20.00	20.63	21.25	21.88	22.50	23.13	23.75	24.38	25.00
1300	9.56	10.20	10.84	11.47	12.11	12.75	13.38	14.02	14.66	15.30	15.93	16.57	17.21	17.85	18.48	19.12	19.76	20.40	21.03	21.67	22.31	22.95	23.58	24.22	24.86	25.50
1350	9.74	10.39	11.04	11.69	12.34	12.99	13.64	14.29	14.94	15.59	16.24	16.89	17.54	18.19	18.84	19.49	20.14	20.78	21.43	22.08	22.73	23.38	24.03	24.68	25.33	25.98
1400	9.92	10.58	11.24	11.91	12.57	13.23	13.89	14.55	15.21	15.87	16.54	17.20	17.86	18.52	19.18	19.84	20.50	21.17	21.83	22.49	23.15	23.81	24.47	25.13	25.80	26.46
1450	10.10	10.77	11.44	12.12	12.79	13.46	14.14	14.81	15.48	16.16	16.83	17.50	18.17	18.85	19.52	20.19	20.87	21.54	22.21	22.89	23.56	24.23	24.91	25.58	26.25	26.93
1500	10.27	10.95	11.64	12.32	13.01	13.69	14.38	15.06	15.75	16.43	17.12	17.80	18.49	19.17	19.85	20.54	21.22	21.91	22.59	23.28	23.96	24.65	25.33	26.02	26.70	27.39

Combined Weight of Car and Hoistway Doors and All Attached Equipment [kg]

NOTES:

$$\frac{1}{2} M \times (V)^2 = 4J$$

Kinetic Energy Formula

M - Combined Weight of Car and Hoistway Doors and All Attached Equipment

V - Speed in meter per second

# Troubleshooting

This section is divided into two topics:

- **Helpful Hints:** Real world information about door operator functions that can help with adjustment, repair, or troubleshooting.
- **Functional Troubleshooting:** Specific information to help the installer overcome most common problems encountered during HSD installation.

## Helpful Hints

Helpful Hints describes:

- Door Open and Door Close Logic
- Self-Holding
- Door Close Limit and Door Open Limit
- [Limit #1 and Limit #2](#)
- [Car Door Bumpers](#)
- [Motor Terminal Designation](#)
- [Learn Operation](#)
- [Stall Protection](#)
- [Door Open and Door Close Protection Timers](#)
- [Temporary Operation for Evaluation](#)
- [Encoder Cable](#)
- [Auto Reset](#)
- [Control Priority](#)
- [Control Status](#)

## Door Open and Door Close Logic

HSD is designed to allow power to be applied indefinitely to hold doors open or closed.

## Self-Holding

Hold open torque parameter “Co” is used to hold doors open and hold close torque parameter “Cc” is used to hold doors closed. This feature is especially useful if doors tend to drift partially closed, when open command is removed, when fully open or drift partially open when fully closed, when close command is removed. Using the Co and Cc parameters, HSD is self-holding in full open or full close positions. (If doors drift closed when **controller** power is removed, then some sort of door hold open device may be required.)

## Door Close Limit and Door Open Limit

DCL and DOL are generated electronically when doors reach full close or full open position, up against the bumpers, and current increases. After an unobstructed “learn operation”, HSD knows the difference between an obstruction and full open or full close position. DCL and DOL can only be generated within approximately the last 1/2-inch (13mm) of travel.

DOL and DCL have loss of power memory. When power is restored after a power loss, DCL will be re-established if doors were fully closed or DOL will be re-established if doors were fully open prior to power interruption.

## Limit #1 and Limit #2

Limit #1 and Limit #2 are outputs from HSD to the elevator controller. Either or both may be used to provide a variety of features including:

- Bypass retiring cam contact for controllers that use a retiring cam contact paralleled with a door position contact in door open logic
- Limited door reversal
- Advance start

The Limit 2 output may be programmed to activate anywhere between the full close and full open position. The Limit 1 output may only be programmed to activate between 50% closed and full closed. Each limit relay is provided with a form “C” contact that can be wired in a Normal Open or Normal Closed configuration. Both Limits have loss-of-power memory of On or Off status. Position memory is restored with the first full open door operation after power is restored.

Limit #1 is adjusted using the “LP” parameter.

Limit #2 is adjusted using the “LC” parameter.



### Caution

Limit #1 and Limit #2 must NOT be used to remove the door open and door close signal to HSD. Doors must reach full open position and generate DOL electronically before removing the door open signal to the drive. Doors must reach full close position and generate DCL electronically before removing the door close signal to the drive.

## Car Door Bumpers

All door operators must have both open and close bumpers. For proper operation, it is very important that car door bumpers are in good shape and securely mounted. Doors must stop on the open door bumper at full open position and on the close door bumper in full closed position. It is also very important that car doors stop on car door bumpers at every floor. Make sure hoistway door bumpers, if provided, do not stop car doors before car door bumpers.

## Motor Terminal Designation

The motor has six terminals, but only four are used. Looking down at the motor from above with the shaft facing you: Starting on the left side closest to the shaft, the first terminal is “W”, then “V” in the middle, and “U” toward the encoder end. The middle terminal on the right side is “N.”

## Learn Operation

The “learn operation” can only take place if the drive thinks the doors are fully closed (indicated when “Lr” is displayed and the DCL LED is lighted). Hold Open/Close switch in close direction until “Lr” is displayed and the DCL LED is lighted. Reduce “C1” parameter if torque is too high in open direction. See table and adjust closing torque parameters if torque is too high in close direction.

### Stall Protection

HSD has built-in stall protection in both directions of travel. In the open direction, an internal stall timer is set for approximately one minute. If the door open signal to the drive is activated for more than one minute, the drive will automatically shut off. The drive will not respond until the signal is removed and reapplied or the opposite direction signal is applied. The stall timer for the close direction operates in a similar manner, but is set for approximately two minutes.

### Door Open and Door Close Protection Timers

Door open and door close protection timers must be set longer than it takes the doors to open or close at the lowest speeds (first open operation after restoring power and nudging close). Door open and close protection timers are set at the elevator Controller.

### Temporary Operation for Evaluation

Temporary operation for evaluation can be accomplished easily by removing the existing motor and setting it aside without removing the wires. Rest the drive on the car top. Install the new motor and wire the motor and encoder to the drive. Wire the drive to a power cord with a plug. **(Be certain that the outlet is providing the correct 120, 208, or 240VAC operating power and that the inverter drive input wiring has been properly set for that voltage.)** Plug the power cord into the car top electrical outlet. Turn on power and adjust the door operator. Once you're satisfied that everything is OK, either return the door operator to its original condition or remove the old motor and temporary wiring, mount the drive, wire the new motor and encoder to the drive and wire the drive to the controller.



#### Note

---

Peelle does NOT recommend permanently wiring the drive to the car lighting power circuit.

## Encoder Cable

The encoder cable is approximately eight feet (2.5 m) long with six (6) pre-stripped wires and a small piece of shrink tubing on one end. The wires are; black, white, red, green, blue and yellow/green. The other end of the cable is connected internally to the motor. We recommend that the cable be kept at its original length and the excess, if any, coiled up in the drive enclosure. However, if the cable length is reduced you will notice that there is no yellow/green wire, but there is a brown wire. The brown wire is not used and the yellow/green wire is actually a short piece of wire attached to the shield.

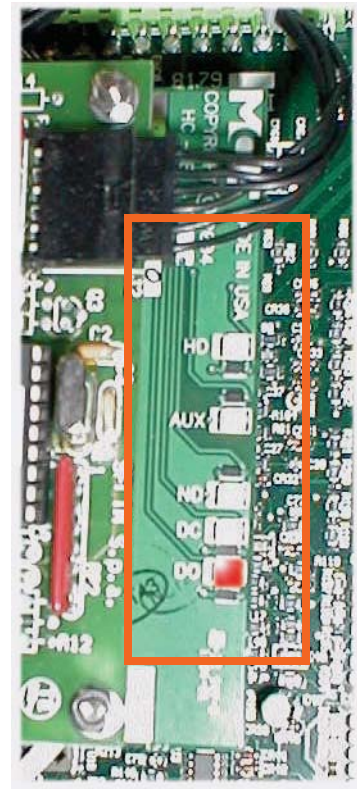
## Auto Reset

If power is lost, then rapidly re-applied, the drive may fault. If so, the drive will auto-reset within three (3) seconds. The drive will accommodate up to four (4) faults within a one-hundred (100) second period of time. Should a fifth fault occur before the 100-second timer has expired, it will be necessary to shut off power to the drive, wait several seconds, then re-apply power. After an auto-reset, the drive operates in the same manner as when power is first applied — the motor will cog to synchronize and the doors will open at slow speed until DOL is established. Refer to the Troubleshooting section should a continuous drive fault occur.

## Control Signal Status

The Isolation Board, located just below the Programmer Board, has LEDs that indicate active control status. (The associated LED lights when its control input is active.) There are five input control signal possibilities:

- Heavy Door
- Auxiliary
- Nudging
- Door Close
- Door Open



### Functional Troubleshooting

Troubleshooting examples are provided in “installation order” specifically to help the installer through the process. The “top twelve” technical support issues are also listed and referenced below. (If you are looking at this on-line (in a pdf file), just click on a top twelve topic to jump to that spot in the guide. If there are multiple entries, just click on the page number.

- Closing torque too high: [Please refer to “Torque Adjustment” on page 30.](#)
- Closing torque too low: [Please refer to “Torque Adjustment” on page 30.](#)
- Opening torque too high: [Please refer to “Torque Adjustment” on page 30.](#)
- Opening torque too low: [Please refer to “Torque Adjustment” on page 30.](#)
- No DCL: Refer to [page 10](#), [page 19](#), [page 24](#), and [page 26](#).
- No DOL: Refer to [page 11](#), [page 19](#), [page 27](#).
- Cannot learn: Refer to [page 10](#), [page 25](#).
- Cannot change parameters: Refer to [page 15](#), [page 25](#).
- Doors drift close: Refer to [page 19](#).
- Doors drift open: Refer to [page 19](#).
- Cut encoder cable, no yellow/green wire: Refer to [page 22](#).
- Car door bumpers: Refer to [page 20](#).

### Power Up

When power is applied to the HSD Drive, the GREEN LED (DL1-U) on the main board will light. The RED LED (DL2-R) on the main board should remain OFF. The Programmer board should display a SINGLE BAR and the REMOTE or LOCAL led will be ON.

**IF...** Programmer display and Remote or Local LEDs are off and green LED on main board is on:

1. Check connections between main board and programmer board.
2. Verify connectors are inserted correctly.

**IF...** Programmer display and Remote or Local LEDs are off and green LED on main board is off:

1. Confirm correct AC voltage provided to terminals.
2. Check all connections between AC voltage supply from controller to transformer in the drive.
3. Confirm main line disconnect switch is ON.
4. Confirm all fast connectors inside drive are inserted correctly.
5. Confirm that no pieces of conductive material dropped onto boards.
6. Check fuses in drive.

**IF...** The red LED on main board is on:

1. Confirm input voltage matches drive, line input configuration. [Please refer to “HSD Wiring Diagram” on page 3.](#)
2. Confirm that no pieces of conductive material dropped onto boards.
3. Confirm all fast connectors inside drive are inserted correctly.

## Motor Synchronization

If power up is successful, the door operator is ready to synchronize the motor.

1. Select LOCAL on the programming board.
2. Press Open/Close switch to provide a momentary OPEN or CLOSE command.

The motor will cog to synchronize the rotor. Time required for this operation varies, but should be less than 2 seconds. When synchronization is complete, the door operator is ready to accept commands.

**IF...** Motor does not cog and synchronize:

1. Confirm motor wires are connected correctly to main board at connector TB-2.
2. Confirm encoder wires are connected correctly to main board at connector TB-3.
3. Confirm programmer to main board connections (TB-9/J2 and TB-8/J1) are OK.

**IF...** Motor cogs indefinitely, drive shuts down (after two minutes), and red LED is ON:

1. Confirm ENCODER WIRES are connected correctly to main board at connector TB-3, especially green wire on terminal 9.
2. Open rear cover of motor and check all connectors to make sure they are inserted correctly.

## First Door Closing

If motor synchronization was successful, the next step is to CLOSE the doors. This is because programming board parameters can only be accessed after the drive detects FULL DOOR CLOSE and the DCL signal is ACTIVE. Even though doors were closed by hand, IT IS ALWAYS NECESSARY to give a close command until DCL is activated. When the first full door close position is detected and DCL is generated, "Lr" will be displayed on the programmer board. Parameters can now be accessed.

**IF...** Motor does not rotate properly, makes noise, or vibrates:

1. Confirm encoder wires are connected correctly to main board at connector TB-3.
2. Open rear cover of motor and check that all connectors are inserted correctly.
3. Confirm that the shielded wire of the encoder cable does not touch any metal part of the enclosure or door operator.
4. If previous steps are OK, cycle power and repeat procedure.

**IF...** On the close command, doors move in open direction, brake, and drive resets:

1. Problems in start-up procedure were encountered and the drive reset. Procedure must be repeated starting with Motor Synchronization.
2. If problems persist, cycle power and repeat entire procedure.

**IF...** Doors reach close position but the DCL signal is not generated:

1. Stop the motor by hand (minimal amount of pressure is usually required) so that DCL is generated. Set lower values for door closing torque parameters.

**IF...** DCL is generated but Pr is not displayed:

1. Check connections between main board and programmer board.

### Learn Process

If the first closing of the doors was completed correctly and DCL is active, the learning process can be executed:

1. With “Lr” displayed, press ENTER.

Doors should reach full open position, then reverse and reach full close position. During this process, it is important that doors open to their maximum width and close completely (including additional movement the motor may make when doors are fully closed).

Completing the learn process is required for proper operation.

**IF...** You press ENTER and learning does not begin:

1. More than likely, DCL was not generated. Give close command again until DCL is generated.

**IF...** During opening, doors stop and reverse before reaching full open, the “C1” parameter may be set too low or there is too much friction:

1. Ensure that doors move freely.
2. If possible, access programmer board and change value of parameter “C1” (DCL must be generated) and repeat learning process.
3. If it is not possible to access the programmer board and change parameter “C1” because DCL was not generated, cycle power and repeat procedure beginning with learn process.
4. Change the value of “C1” and repeat learning process.

**IF...** During opening, doors reach full open and push up against bumper but do not reverse:

1. If possible, stop motor by hand. Doors should now reverse and close. If not, turn off power and attempt to open doors again.
2. Check the mechanical transmission system.
3. Repeat start up procedure. If problem persists, cycle power and repeat procedure beginning with first closing of the doors. After this, reduce value of “C1” and “Co” and execute learning process.
4. Repeat until correct values for “C1” and “Co” are found.

### Note



Multiple parameters affect closing torque. Please refer to “Inverter Drive Parameters” on page 13.

---

**IF...** During opening, doors reach full open, push up against bumper, and stop with red LED (DL2-R) on, a fault condition occurred (most likely due to low AC input voltage):

1. Check AC voltage using a voltmeter. Check voltage continuously during opening, especially when doors push up against full open bumper. Voltage should not drop by more than 5% of nominal value (120/208/240VAC).

If voltage drop is excessive, and drive locks up, cycling power is required.

2. Excessive voltage drop may be due to a poor connection between source and drive. Wires may be undersized. Transformer in controller may be underrated.
3. As an experiment, temporarily use an alternate power source such as car lighting supply or a building convenience outlet circuit and repeat learn process. If problem is resolved in this manner, a more robust power source from controller is required.

**IF...** During closing, doors reach full close, push up against bumper, and stop with red LED (DL2-R) ON, follow steps for the problem above.

**IF...** During closing, doors stop before reaching full close and DCL is generated, “C3” value may be too small or there is too much friction:

1. Ensure doors move freely without excessive friction.
2. If doors move freely, increase “C3” and repeat learn process.

**IF...** During closing, doors reach full close and push up against bumper but DCL is not generated:

1. If possible, try to stop motor by hand (only a small amount of pressure is usually required). The drive should now generate DCL. If not, turn off power.
2. Check mechanical linkage and transmission system.
3. Repeat start up procedure. If problem persists, cycle power and repeat procedure through first closing of doors. After this, reduce value of “C3” and execute learn process.
4. Repeat this step until correct value for “C3” is found.

**Note**



Multiple parameters affect closing torque. Please refer to “Inverter Drive Parameters” on [page 13](#).

---

### First Open/Close After Cycling Power

After power is cycled, and doors are in full close position with DCL active, an OPEN command should be given using local command on programmer board. Doors will move in open direction at REDUCED SPEED. If a CLOSE command is given before DOL is generated, doors will move in close direction at REDUCED SPEED.

DOORS WILL MOVE AT REDUCED SPEED UNTIL FIRST DOL IS GENERATED.

This is necessary after having cycled power because the drive needs to determine a fixed reference point for door position. (While the drive was turned off, the doors could have moved.) BE SURE CONTROLLER DOOR OPEN PROTECTION TIMER HAS SUFFICIENT TIME TO ALLOW FOR FIRST SLOW OPENING WITHOUT TRIPPING (set at elevator Controller).

**IF...** After reaching full open, DOL is generated but doors close at reduced speed:

1. Check value of “U3” parameter. Increase if set too low.
2. Check that NUDGE speed was not inadvertently selected.
3. Check that HEAVY DOOR was not selected by controller.
4. Be sure learn process was performed correctly.

**IF...** After reaching full open, DOL is NOT generated and doors close at reduced speed:

1. If problem persists, decrease “C1” and “Co” parameters.

**IF...** DOL is generated before doors reach full open and doors stop:

1. Check for excessive friction or an obstacle in path of doors.
2. If first step checks OK, increase “C1” parameter.

**IF...** After reaching full open, DOL is generated and doors close at correct speed but, when fully closed, DCL is not generated:

1. Should problem persist, decrease “C3” parameter.
2. Should problem persist, repeat learn process.

**IF...** Red LED turns ON: [Please refer to “During opening, doors stop and reverse before reaching full open, the “C1” parameter may be set too low or there is too much friction: ” on page 25.](#)

**IF...** Doors move in close direction but stop before reaching full close and DCL is not generated:

1. Check that there is no obstruction.
2. Check that torque is sufficient to overcome friction.
3. If everything appears to be OK, increase “C3”.

## Opening and Closing

Open and closing operations are accomplished by setting parameters for:

- High Speed Open and Close speeds using “U1/ U3”.
- Low Speed Open and Closing speeds using “U2/ U4”.
- Initial Open speed and distance using “U0” and “PL”.
- Open and Close acceleration using “A0/A2”.
- Open and Close deceleration and slowdown distance using “A1” and “P2/A3” and “P7”.

**IF...** Deceleration during opening or closing is too fast and doors jerk:

1. Parameter “A1” or “A3” is set too high. Reduce “A1” and “A3” and, consequently, reduce “P2” and “P7”.
2. Deceleration is too late and doors are approaching full open/close position too fast, safety braking action is activated, which suddenly reduces door speed. Reduce “P2” and “P7” and increase “A1” and “A3”.
3. These steps are usually sufficient to solve this problem. However, should problem persist and YOU ARE SURE YOU have tried all possible combinations of values for “A1”, “A3”, “P2”, and “P7”, change the value of the “Cb” parameter. Start with a value of 20, for example, and decrease gradually, checking each time until the problem is corrected.

“Cb” is a parameter which is usually kept at 00 value and is used to limit braking action of doors. We suggest it be used only if absolutely necessary and no other action is effective. Do not reduce value of “Cb” too much, otherwise there may not be enough braking action. It should be kept at the highest possible value that corrects the problem.

Setting “Cb” to 00 does not put a limit on braking torque.

**IF...** A high value for opening speed is set but doors move slower than expected:

1. Be sure DOL was detected.
2. Acceleration parameter “A0” may be set too low.
3. Doors may be very heavy or there is excessive friction or mechanical ratio between motor and doors is low so that torque or power limit has been reached.

**IF...** A high value for closing speed is set but doors move slower than expected:

1. Be sure DOL was detected.
2. Check that open acceleration parameter “A2” is not set too low.
3. Doors may be very heavy or there is excessive friction or mechanical gear ratio between motor and doors is low so that torque or power limit has been reached.
4. Value of “C3” parameter is too low, so that allowable closing torque is too low and not enough to move doors at desired speed. Increase value of “C3” gradually and check if this corrects problem.

### Note

Multiple parameters affect closing torque. Please refer to “Inverter Drive Parameters” on page 13.

**IF...** Doors bump when opening or closing:

1. Slowdown points “P2” or “P7” are too near full open or close positions. Reduce “P2” or “P7”.
2. Deceleration values “A1” or “A3” are too low. Increase “A1” or “A3”.
3. Low speeds “U2” or “U4” are too high. Reduce “U2” or “U4”.
4. Opening and closing speeds “U1” or “U3” are too high and doors are heavy with low mechanical ratio so braking power required exceeds operator ratings.
5. “Cb” parameter is at a low value so braking action has been reduced too much.

**IF...** While opening or closing, especially during acceleration, doors stop and red LED turns ON:

1. Check AC input voltage. Be sure there is not excessive voltage drop, measured at terminals L1D and L2D, while opening or closing, especially during acceleration.

**Note**

Make certain that hoistway doors are engaged while checking for excessive voltage drop.

---

### Reopening and Reclosing

Reopening and reclosing are accomplished by setting parameters “Po”, “Pc”, “Pr”, “Ar”, “Ab”. During reopening, the function of parameters “P2” and “A1” is substituted for by “Po” and “Ar”. During reclosing (Fire Phase II “peek-a-boo” operation), the function of parameter “P7” is substituted for by “Pc”. “Ab” regulates reversal braking.

Parameter “Pr” sets the transitional edge between “normal opening” and “reopening.” This parameter should be kept at 00 except in rare cases where mechanical ratio between motor and doors varies and dramatically changes speed.

**IF...** During reopening, doors bump, parameter “Po” is set too high and/or “Ar” is set too low.

1. Increase “Ar” and/or reduce “Po” until correct compromise is found.

**IF...** During reclosing, doors bump

1. Parameter “Pc” is set too high. Reduce “Pc”.

**IF...** During reopening, doors decelerate too rapidly, parameter “Po” is set too low and/or “Ar” is set too high.

1. Increase “Po” and/or reduce “Ar” until correct compromise is found.

**IF...** During reclosing, doors decelerate too rapidly, Parameter “Pc” is set too low:

1. Increase “Pc”

**IF...** During reopening or reclosing, deceleration point changes dramatically depending on position where reversal is commanded, parameter “Pr” has probably been set to a value other than 00 or has been set too high.

1. Reduce “Pr” until there are no inconsistencies. If not strictly necessary, set “Pr” at 00.

**IF...** During reopening, the doors take too long to fully reopen:

1. Increase “Pr” incrementally. Remember that the more “Pr” is increased, the more the possibility of inconsistency while approaching full open.

**IF...** During reversals, doors stop and reverse too rapidly, producing mechanical vibrations and bumps:

1. Reduce “Ab” until reversal is smooth.
2. Check mechanical system and correct as required.

**IF...** During reversals, it takes too long for doors to stop and reverse:

1. Increase “Ab” until reversal is smooth.

## Torque Adjustment

Torque adjustment is accomplished by setting parameters “C1”, “C3”, “Co”, “Cc”, and “Cb”.

### Note

After torque adjustments are made, learn process must be repeated. Multiple parameters affect closing torque. [Please refer to “Inverter Drive Parameters” on page 13.](#)

---

**IF...** In close direction, door close pressure is too high:

1. Reduce “C3” until door pressure is correct.

**IF...** In close direction, doors stop before reaching full close and DCL is NOT generated:

1. Check for an obstruction.
2. Check for friction in door system and, if necessary, increase “C3”.

**IF...** In close direction, DCL is generated slightly before doors are fully closed:

1. Make sure learn process was performed correctly.
2. “C3” may be set too low. Increase “C3”.

**IF...** In open direction, DOL is generated slightly before doors are fully open:

1. Make sure learn process was performed correctly.
2. “C1” may be set too low. Increase “C1”.

**IF...** After doors reach full open and DOL is generated, doors drift toward close direction:

1. If doors drift close, increase “Co”. The value of “Co” should be set to minimum necessary to keep doors from drifting close in order to minimize heating motor.

**IF...** After doors reach full close and DCL is generated, doors drift toward open position:

1. If doors drift open, increase “Cc”. The value of “Cc” should be set to minimum necessary to keep doors from drifting open in order to minimize heating motor.

## Maintenance

On a regular basis, while checking other elevator components, we suggest the following maintenance for door operators.

Check and adjust if needed:

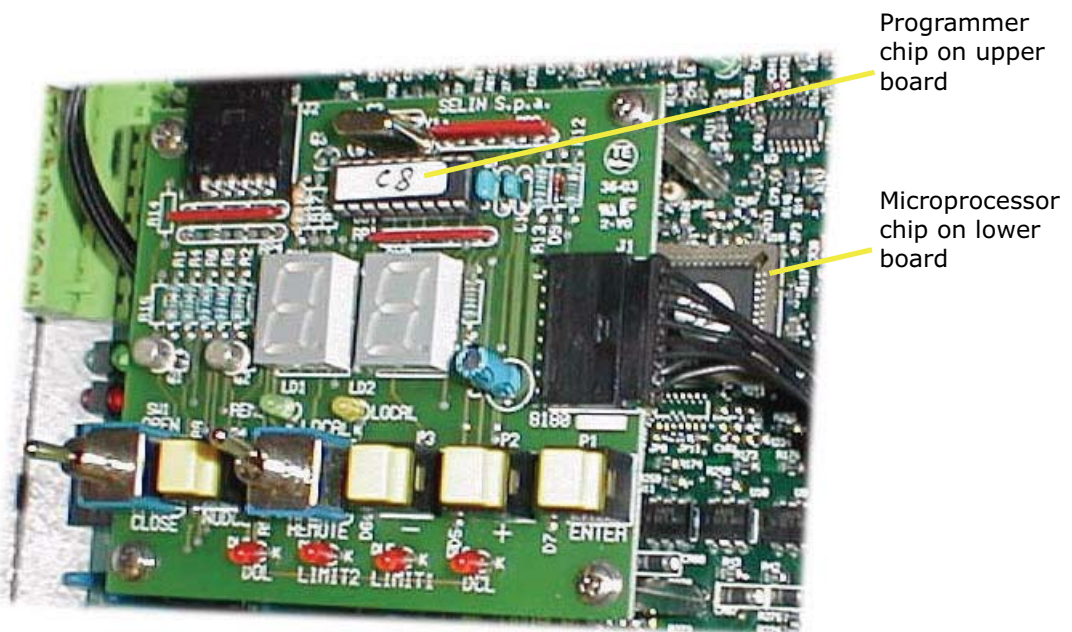
- Door belt: Check tension; adjust if needed. Check that belt drive ridges are not rounded. Replace if cracked or worn.
- Door bumpers: Check for distortion or cracking. Replace if needed.
- Check that operator and motor mountings are tight and true.

## Firmware Upgrades

Firmware (software and microchips) upgrades are sometimes shipped to the field. Each upgrade kit has a set of instructions but, if they are unavailable, generic upgrade instructions are also provided here. Upgrade kits may contain one or two microchips and (if needed) a special tool designed to safely remove the microprocessor chip from its socket:

- C\_: 18-pin programmer chip
- S\_: 44-pin microprocessor chip

The programmer chip replaces the existing programmer chip on the upper board in the HSD drive enclosure. The microprocessor chip replaces the existing chip on the lower board in the enclosure.

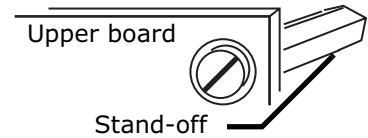


### Caution

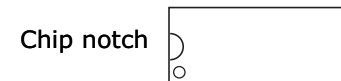
Static discharge will damage microchips — be certain you are grounded as you work.

## Replacing Microchips

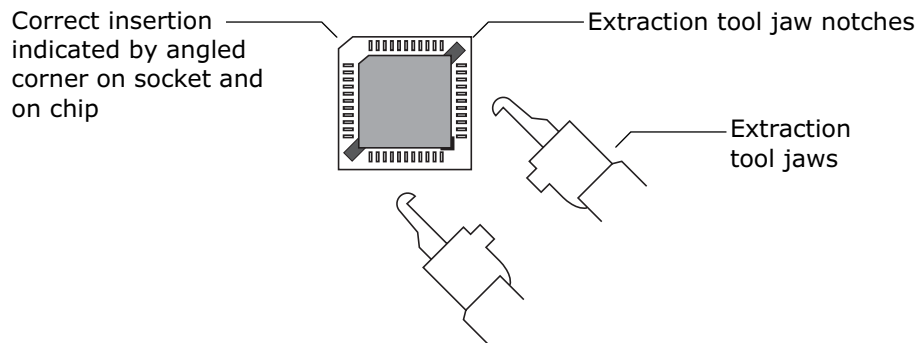
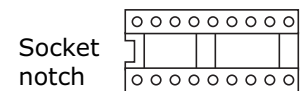
1. Make certain power to the HSD inverter drive is shut off.
2. Remove the four screws securing the cover on the drive enclosure. Remove the cover. If the inverter drive is equipped with an ON/OFF switch, place it in the OFF position.
3. Remove the four screws securing the upper board to its stand-offs. Hold the stand-offs so that they do not unscrew from the lower board.
4. Using a small (preferably plastic) screwdriver, carefully lever the programmer chip out of its socket, raising first one end and then the other in stages to avoid damaging pins and socket.



5. Note that the chip must be correctly inserted in the socket with the notch at one end of the chip matched to the notch at one end of the socket. Insert the new chip gently, taking care not to bend the pins. Make certain the chip is completely seated in the socket.



6. Next, use the special tool included with this kit to carefully remove the microprocessor chip from its socket on the lower board. Be careful not to damage the socket or bend the pins on the chip.



7. Note that the microprocessor must be correctly inserted in the socket with the angled corner of the chip aligned with the angled corner of the socket. Insert the new microprocessor chip using **EXTREME CARE** not to bend the pins. If a pin is bent, the IC must be replaced. It is very easy to break a pin, so be careful. Make certain the microprocessor chip is completely seated in the socket.
8. Reinstall the upper board on its stand-offs. Take care not to overtighten the screws.
9. If the inverter drive is equipped with an ON/OFF switch, place it in the ON position. Reinstall the cover on the drive enclosure.
10. Restore power to the inverter drive. Refer to earlier sections of this guide for operating and adjusting instructions.

## **Copyright**

Copyright 2006, The Peelle Company Ltd. All Rights Reserved.

This document may not be reproduced, electronically or mechanically, in whole or in part, without written permission from The Peelle Company Ltd.

## **Trademarks**

All trademarks or registered product names appearing in this document are the exclusive property of the respective owners.

## **Warning and Disclaimer**

Although every effort has been made to make this document as complete and accurate as possible, The Peelle Company Ltd. and the document authors, publishers, distributors, and representatives have neither liability nor responsibility for any loss or damage arising from information contained in this document or from informational errors or omissions. Information contained in this document shall not be deemed to constitute a commitment to provide service, equipment, or software by The Peelle Company Ltd. or the document authors, publishers, distributors, or representatives.

## **Limited Warranty**

- a. Peelle warrants to the Customer that goods and services sold will be free from defects in material, workmanship and title and will conform to any mutually agreed upon specifications. If any failure to meet this warranty appears within one year from the date of shipment of the goods or completion of the services, on the condition that Peelle be promptly notified in writing, Peelle will correct any such failure by re-performing any defective portion of the services furnished and supplying conforming goods. If the contract covers installation, repair or maintenance, Peelle will correct the failure by re-performing any defective service, and either repairing or replacing (at its option) any defective goods furnished and any damaged equipment upon which the service was performed resulting from defective service. If re-performance is not practicable, Peelle will furnish without charge services in an amount essentially equal to those which, in Peelle's sole judgement, would have been required for re-performance.
- b. The preceding paragraph a. sets for the exclusive remedy for all claims based on failure of, defect in, goods or services sold hereunder, whether the failure or defect arises before or during the warranty period, and whether a claim, however instituted, is based on contract, indemnity, warranty, tort (including negligence), strict liability or otherwise. The foregoing warranty is exclusive and is in lieu of all other warranties whether written, oral, implied or statutory.

AS TO ALL GOODS SOLD, NO IMPLIED STATUTORY WARRANTY OF MERCHANTABILITY OR FITNESS FOR PARTICULAR PURPOSE SHALL APPLY.

# NOTES

# NOTES



## **Contact Information**

### **Canada**

The Peelle Company Limited  
195 Sandalwood Parkway West  
Brampton Ontario, Canada L7A 1J6

Local (905) 846-4545

Out of Area 1-800-787-5020

Fax (905) 846-2161

exportsales@peelldoor.com

### **Technical Support**

Zygmunt Dziwak (English & Polish) ex 244

**[www.peelldoor.com](http://www.peelldoor.com)**