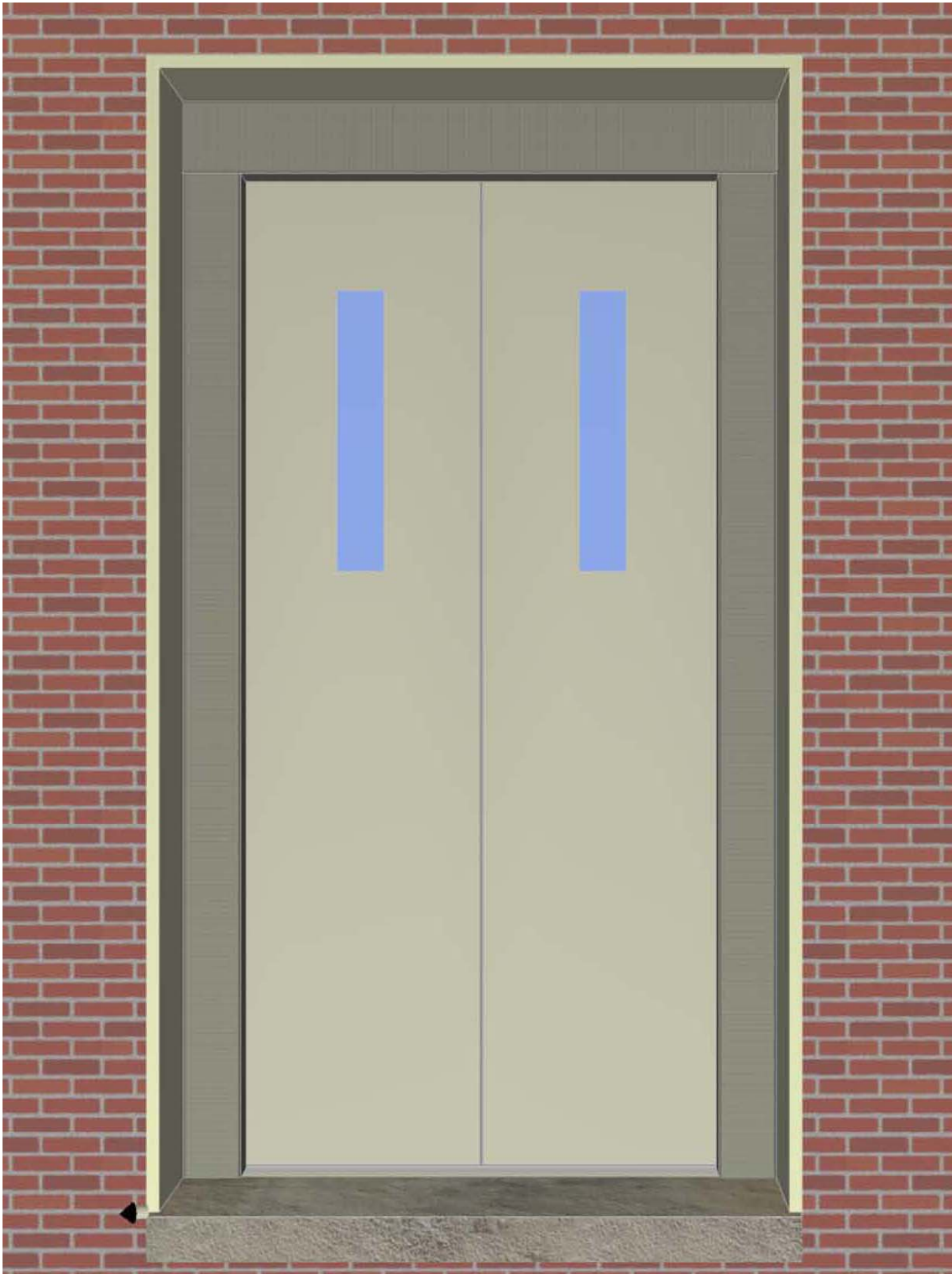
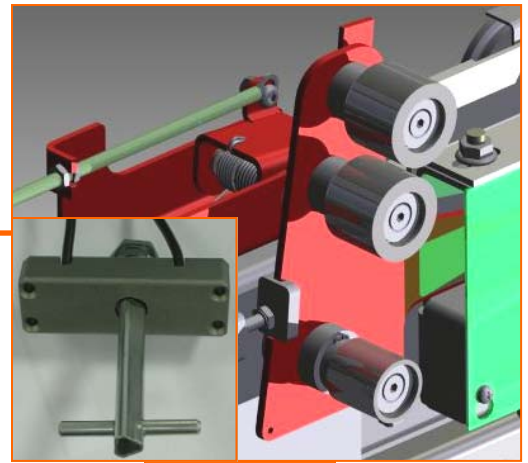
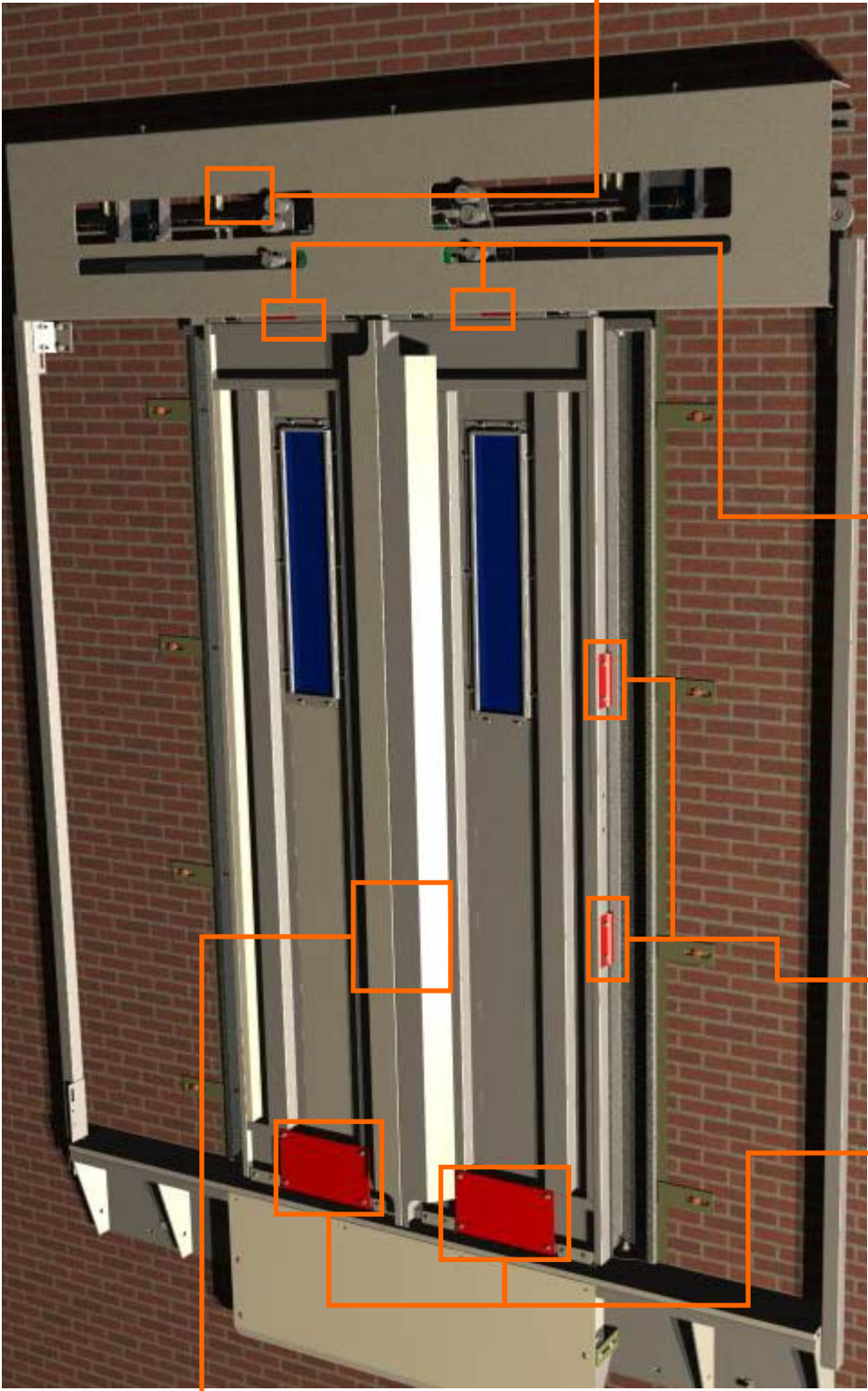


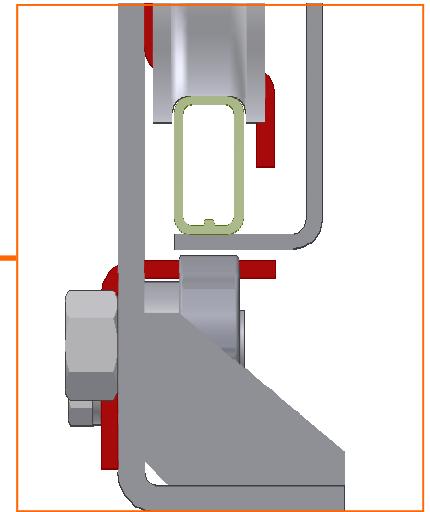
PEELLE VANDAL RESISTANT DOORS
EN81-71 Category 1 & 2



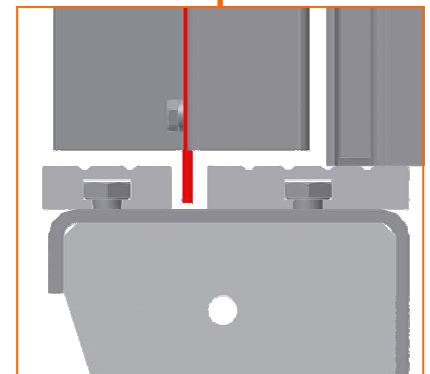
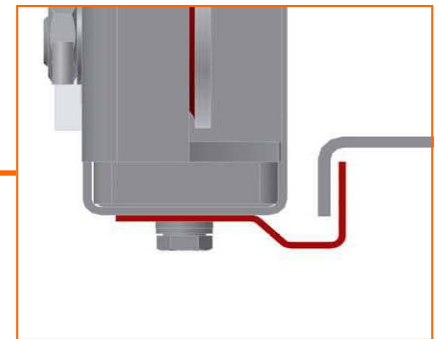
PEELLE VANDAL RESISTANT DOORS EN81-71 Category 1 & 2



5.3.2.1



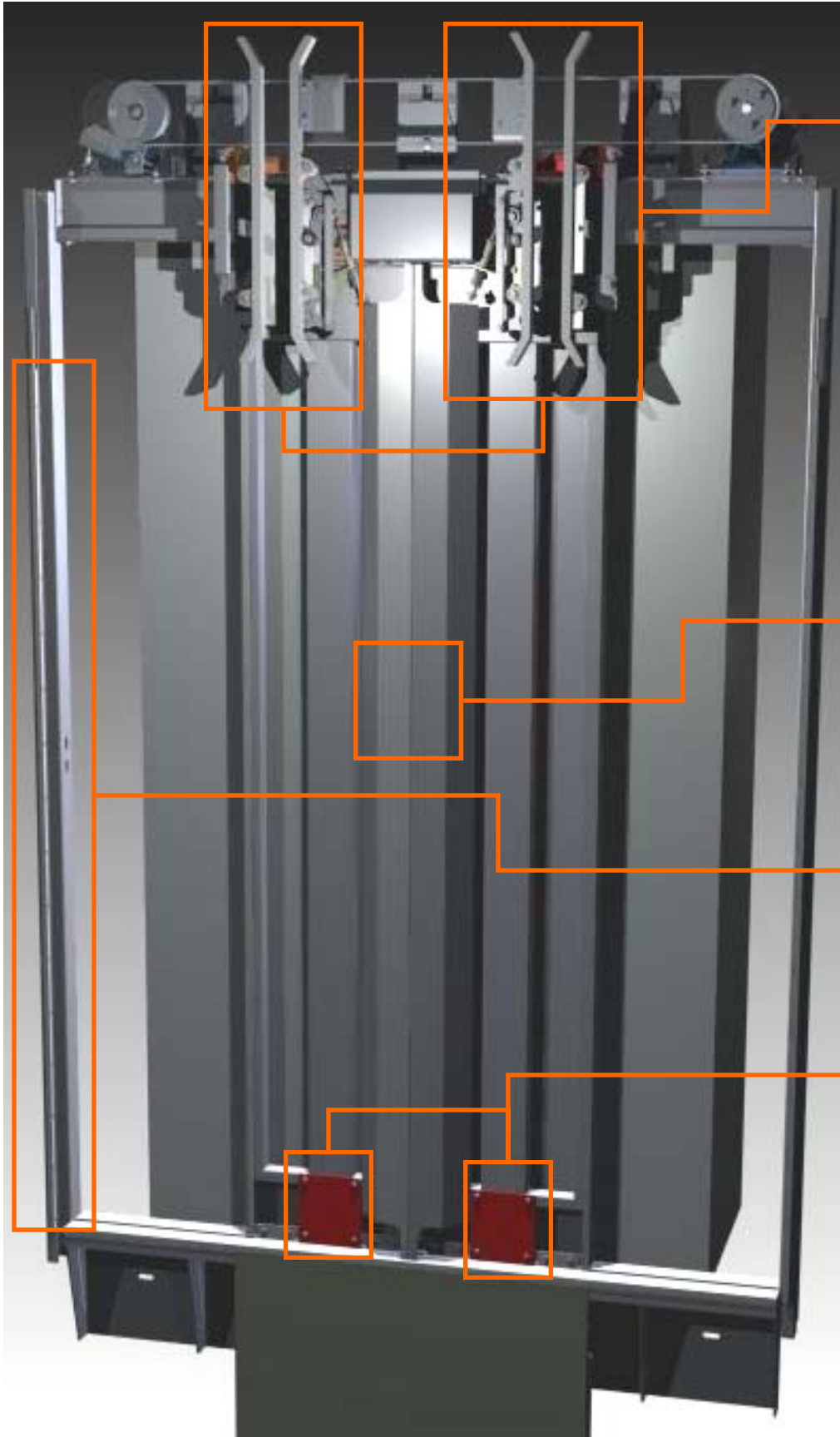
5.3.1.3



5.3.1.3

5.3.1.5 & 5.3.1.8

PEELLE VANDAL RESISTANT DOORS EN81-71 Category 1 & 2



5.3.5

5.3.1.5 & 5.3.1.8

5.3.4

5.3.1.3

PEELLE VANDAL RESISTANT DOORS

EN81-71 Category 1 & 2

5.3.1.3	Doors shall be provided with a means for retaining the door panels in position should the roller or guide shoe assemblies fail. These devices withstand, on their own, the soft pendulum shock test as specified in Annex J of EN81-1:1998 or EN81-2:1998 with a falling height increased to 1400mm without loss of integrity of the door assembly.
5.3.1.5	For Category 2 lifts: The distance between each landing door, or its attachments at the leading edge, and the car door(s), or its attachments at the leading edge, shall not exceed 35mm. This distance shall be maintained back from the leading edge over a length of not less than 75mm and returned at an angle not exceeding 45° to the rear of the door panel. This return angle may be omitted over a length not exceeding 200mm at the top and/or bottom of the door panel to allow the fixing of door equipment. Where the distance is maintained back for a length of 200mm or more, then the return angle is not required. .
5.3.1.8	For Category 2 lifts: The leading edge profile of the car and landing doors shall be formed as an integral part of the door.
5.3.4	For Category 2 lifts: Any protective devices for reversing the car and landing doors when closing shall be positioned such as to be inaccessible to unauthorised persons.
5.3.5	The car door(s) shall be provided with a mechanical locking device in compliance with EN81-1:1998 or EN81-2:1998, 8.9.3? See Note c) .
5.3.2.1	At any floor where the lift is not present, a security system shall prevent the opening the landing door with an emergency unlocking key as stated in 7.7.3.2 of EN81-1:1998 or EN81-2:1998 or by using an item as described in EN81-71:2005 Annex E unless this system has been de-activated.